

# VisiWinNET 2005

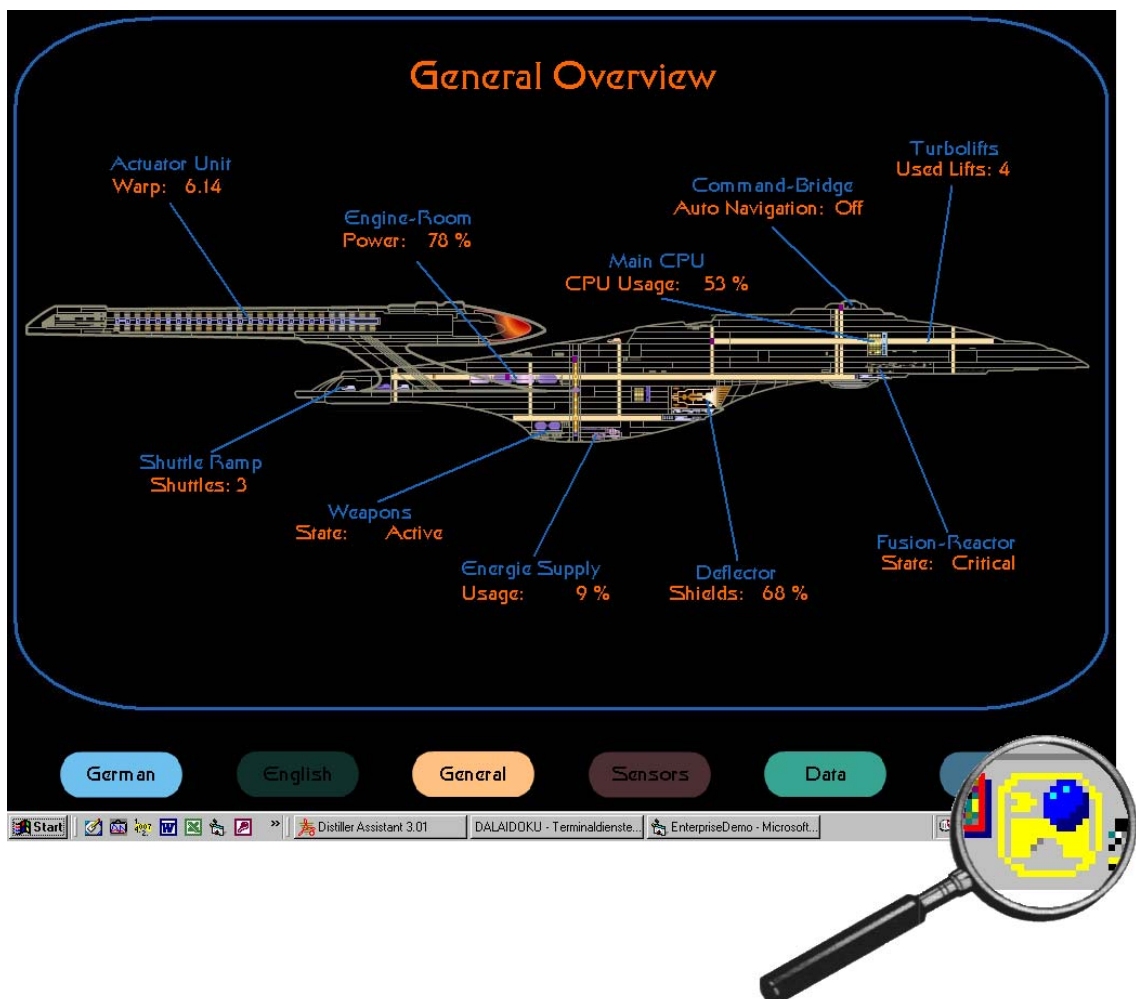
## VWN-Manager



- **VisiWin**
- **VisiWinNET**
- **Common**
- **Class Library**
- **Systems**
- **Tools**
- **Technical Informations**
- **Inosoft OPCServer**
- **Basics and helping tools**
- **Protocols**

# VisiWinNET 2005

## VWN-Manager



VisiWinNET VWN-Manager in the Application







The contents of this manual must not otherwise be used without explicit written consent from INOSOFT GmbH.

We have checked the contents of this manual for compliance with the described software. Discrepancies can, however, not be ruled out. For this reason we cannot guarantee full compliance. The contents of the manual are subject to regular checking for necessary updates/amendments. Such amendments will be made in the subsequent edition.

Suggestions for improvement are welcome.

## Legend

In order to point out particular paragraphs the following symbols are used in the INOSOFT documentations:

	<b>Attention</b>	Passages with this sign should be read – and observed – with particular attention.
	<b>Hint</b>	Important paragraph “additional information”
	<b>Tip</b>	Many roads lead to Rome; here a shortcut is to be found.
	<b>In work</b>	Functions that are in preparation or already implemented but not yet prepared for documentation.
	<b>Example execute</b>	Instructions to be carried out in an example
	<b>Observe result</b>	Results to be observed with carrying out the exemplary instructions

© / ™ / ®

Windows®, Windows NT®, Windows 2000®, Windows XP® are registered trademarks of the Microsoft company.

Further product names marked ® are trademarks of the appropriate manufacturers.

INOSOFT GmbH created on

VisiWinNET Version: from 6.04.000

created on 08.06.2010

# Contents

<b>1 Preamble</b> .....	<b>1</b>
<b>2 VWN-Manager</b> .....	<b>2</b>
2.1.1 Data collecting (VisiWin-Engine).....	2
2.1.2 VWN-Server-Container.....	2
2.1.3 Client-Server operation.....	3
2.1.4 Overall view of the coherences.....	4
2.2 VWN-Manager menu structure .....	5
2.2.1 Main menu.....	5
2.2.2 Start.....	6
2.2.3 Configuration .....	7
2.2.4 Diagnosis (Log book display).....	11
2.2.5 Server list .....	12
2.2.6 VWEngine.....	12
2.3 VWN-Manager diagnosis (Server Log book) .....	15
2.4 The VWN-Manager as OPC-Server .....	18
<b>3 Error messages</b> .....	<b>19</b>
3.1 Alarm system („VW-Alarm Server“):.....	19
3.2 Trend- / Archive system („VW-Trendserver“):.....	21
3.3 Recipe- / Format administration („VW-Recipe server“):.....	24
3.4 User administration („VWUserMgtServer“):.....	26
3.5 VisiWinEngine-Manager („VWN-Manager“): .....	27
3.6 VisiWinEngine for VW-32 Projects („VWEKernel“):.....	29
3.7 VisiWinEngine for OPC-Projects („VWEKernelOPC“): .....	31

# 1 Preamble

## About this manual

This manual contains specific information on the VisiWinNET VWE Manager, among others general advice, the operating reference, and the runtime error diagnosis.




## Questions and Problems

For technical questions and problems please contact your responsible INOSOFT agent or the INOSOFT GmbH Support under +49 (5221) 16 66 02 or email: [Support@INOSOFT.com](mailto:Support@INOSOFT.com)

Frequent questions and problems are dealt with on our homepage under [www.inosoft.com](http://www.inosoft.com)

There you will also find a support area for direct contact with our Main Office.

## 2 VWN-Manager

-  The VWN-Manager in Stand-By operation (before project selection)
-  The VWN-Manager in routine operation (after project start, **Cursor** moves)
-  The VWN-Manager with not acknowledged system error (red flash)

In routine operation the VisiWin-Engine-Manager (VWN-Manager) is located as a little icon with a yellow bridge next to the computer clock in the task bar (also wrongly called tray area). It includes a flash-in menu operated by right mouse click in which configuration can be proceeded with, process variable (Items) states can be displayed and the system diagnosis logbook can be viewed. Following system functions are combined in the VWN-Manager:

### 2.1.1 Data collecting (VisiWin-Engine)

VisiWin Engine (also VWE or briefly VWE) supplies all process data from the connected controlling, field buses and other data suppliers to the superior visualization (VB-Application). The data collecting is processed through a standardized OPC-Interface or else with specific drivers (VisiWin Drivers). It can be processed optional in the sampling procedure (polling mode with fixed sampling rate) or asynchronous with changed process data. The two operating modes can also be merged.

Following data types are supported: BIT, BYTE (signed/unsigned), WORD (signed/unsigned), DWORD (signed/unsigned), REAL (single/double precision), DATE (Windows-Date format), structures and fields of all these data types.

### 2.1.2 VWN-Server-Container

Additionally the VWN-Manager is a container, in which various data processing programs (VWN-Server) can manage and interpret the existing PLC data. On the system side, following is being **delivered along** at present: Alarm system, User administration, Recipe-/Format administration, Trend-/Archive system, VB-Formula-Compiler and Text- and Language administration.

Using an available tool kit for creation of characteristic servers, written in C++, customer specific data processing options can be realized. There is a data interface, with which the available data points can be read out and written easy and fast. In addition all running servers will be informed about the queuing system messages. Characteristic system messages can be created and the system logbook can be accessed as well. Many VWN-Servers (i.e. the Alarm systems have their characteristic interface to the VB-Application (here, Alarm list, alarm line).

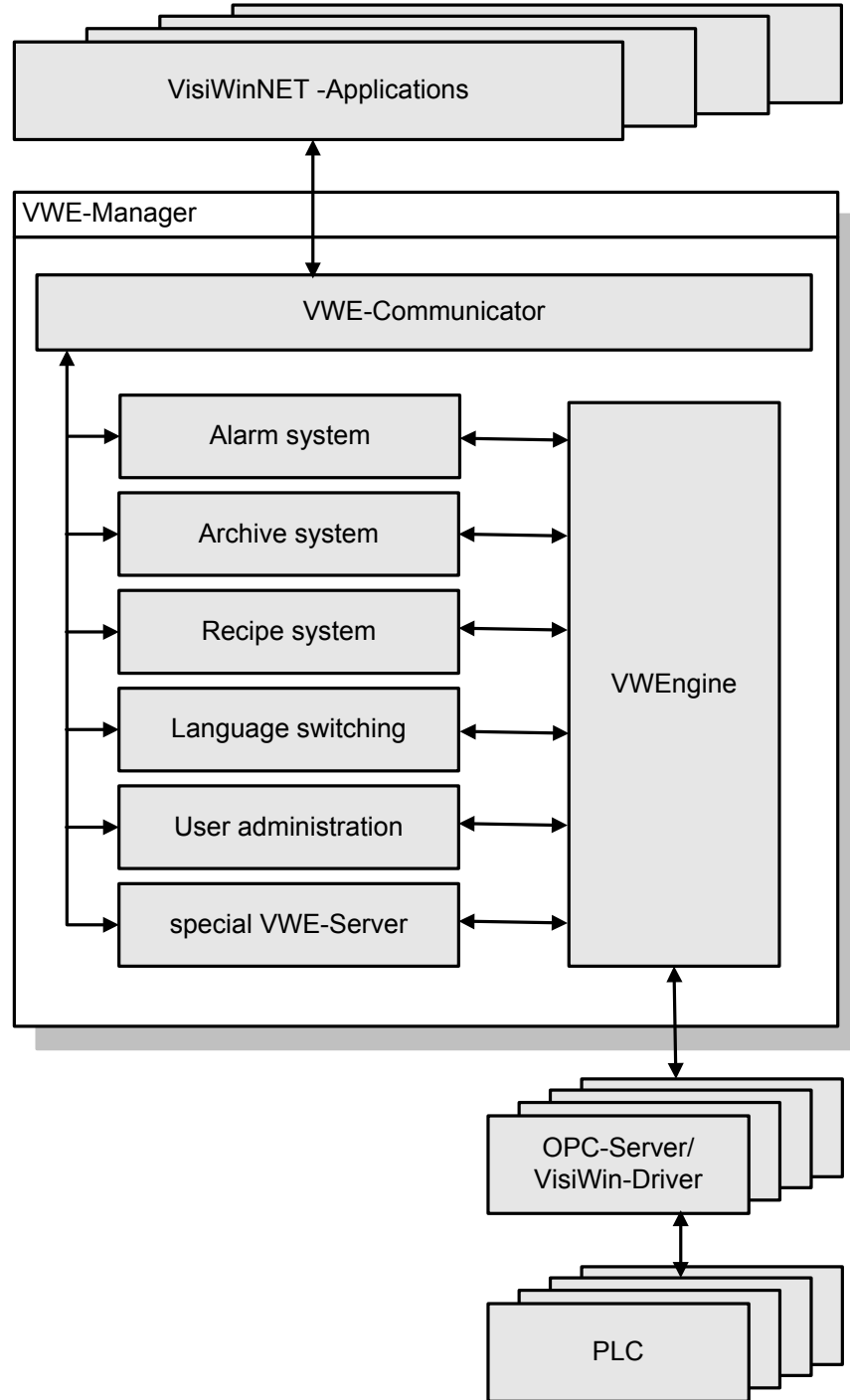
### 2.1.3 Client-Server operation

In the Single-Application-Operation the VB-Application as well as the VWN-Manager can be found on the identical data processor. They communicate through the Windows-COM-System. The VWN-Manager is boots automatically with the VW-Application start.

In the Client-Server Operation one or more VB-Applications (Clients) and the VWN-Manager (Server) are located on different data processors and communicate through Windows-DCOM then. In this case the VWN-Manager can either be booted with data processor start of the server data processor or else by the first client to be connected. There the VWN-Servers run on the server data processor as well and serve all clients at the same time.

### 2.1.4 Overall view of the coherences

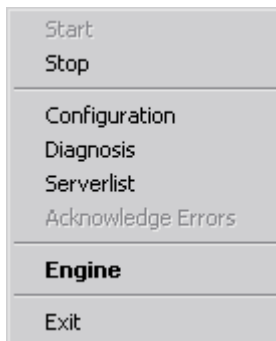
#### VWEManager in system



## 2.2 VWN-Manager menu structure

### 2.2.1 Main menu

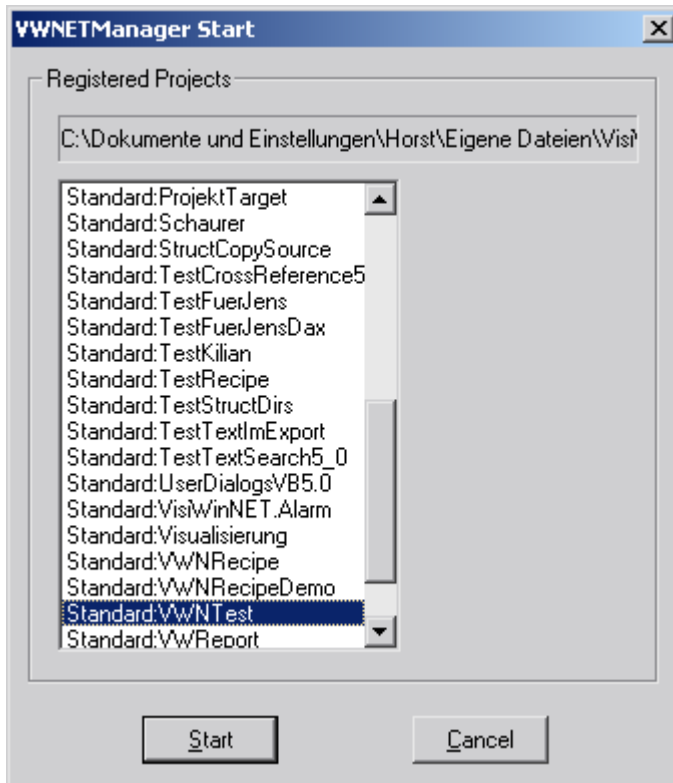
The Default-function, which can also be reached through a double click on the VWN-Manager-Icon, is marked in **bold type**. Before a project was started, it is the Start-menu, while operating it is the **VWEngine**.



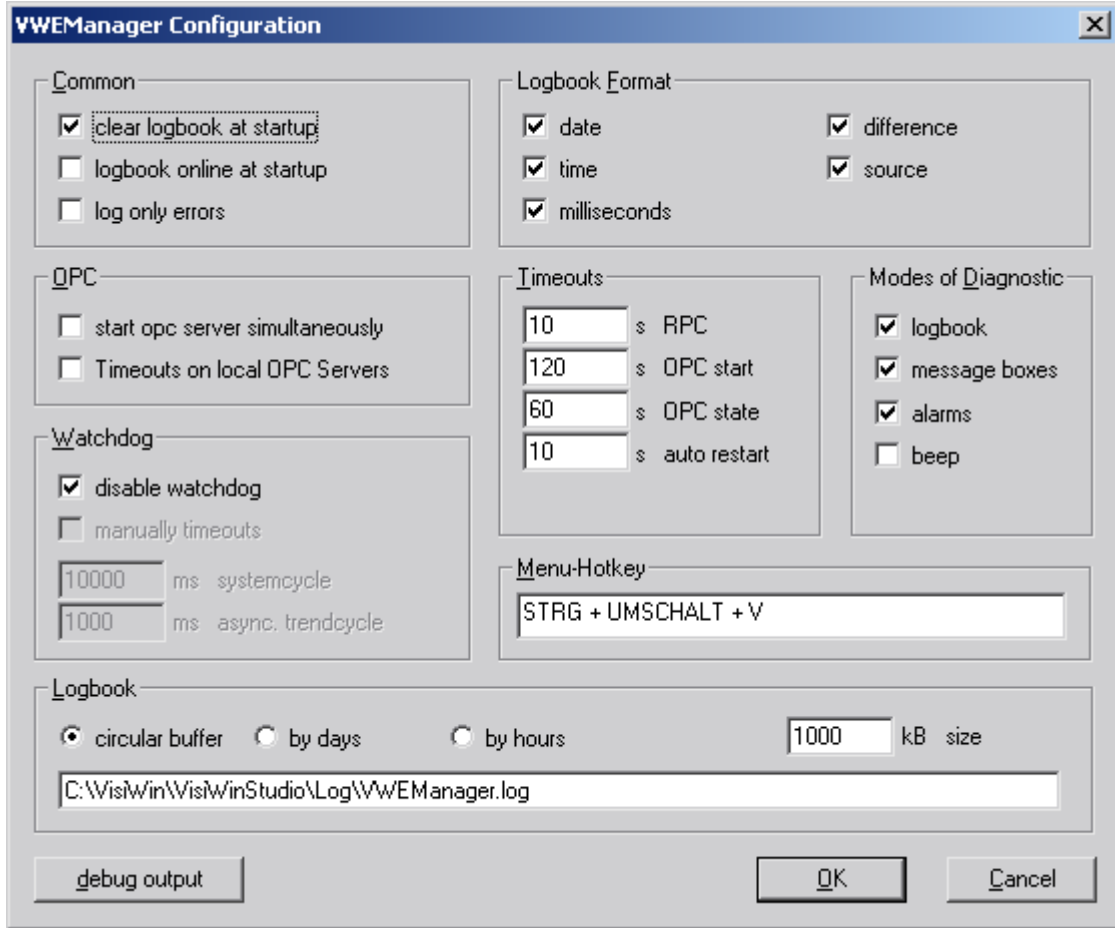
<b>Start</b>	Starts data collecting and VWN-Servers manually (i.e.: in the client-server mode or for diagnosis purpose). Normally the VWN-Manager is started automatically by the VB-Application.
<b>Stop</b>	Stops data collecting manually.
<b>Configuration</b>	VWEngine and diagnosis settings
<b>Diagnosis</b>	Display of log book
<b>Server list</b>	Lists and states of the started VWN-Servers
<b>Acknowledge errors</b>	If a system error occurred (VWN-Manager flashes red) it can be acknowledged here. Then it will also be acknowledged in the alarm lists/ -lines of the VB-Application.
<b>Engine</b>	Access to the VWEngine, all data points (Items) can be displayed and manipulated here.
<b>Exit</b>	Manual closing of VWN-Manager

### 2.2.2 Start

Data collecting for one of the projects, registered on the data processor can be started manually for diagnosis purposes.



### 2.2.3 Configuration



**Common**

- clear logbook at startup
- Logbook online at startup
- log only errors

**Logbook format**

- Date, time, Milliseconds
- Difference
- Source

**Log book settings**

With every application start the logbook will be created new.

The diagnosis display (also see diagnosis) is immediately „online“ with first diagnosis menu call. Entries, registered in the logbook in the course of the application, appear directly in the diagnosis window.

Only system error but no system information is recorded in the logbook.

Log book design settings.

Selected time and date will be recorded.

Time difference to the previous logbook entry will be recorded in milliseconds.

Information on the source of the logbook entry will be recorded.

**OPC**

Start OPC server  
simultaneously

**OPC-Client configuration**

Either parallel start of all connected OPC-Servers or start in succession. The setting can be used if the OPC-Servers, used in the project are initiated on another data processor in the network. Thus, the OPC-Server start will not stress the system resources of the data processor. Therefore, the parallel start speeds up the initialisation phase.

Time outs on local  
OPC-Server

Determines, whether function calls in an OPC-Server, located on the identical data processor as the VWN-Manager, are to be monitored per timeout (with remote OPC-Servers this happens automatically)

**Watchdog**

Settings for cycle time monitoring of the VVEngine. If the current cycle time is ten times bigger than preset, it is considered that a system component does work incorrect and causes a system error. An optional Watchdog-Server can react adequate, i.e. restart the data processor.

disable watchdog

Turns off the internal monitoring of process.

manually timeout

Switch between automatic and manually selected cycle time limits.

ms System cycle

Here, optionally another cycle time limit, than the automatic preset (10 x preset cycle time), can be registered for the system clock (in milliseconds).

ms async. Trend cycle

Here, optionally another cycle time limit, than the automatic (10 x preset cycle time) can be registered for the minimum Archive-(Trend-) recording cycle. (In milliseconds).

## Timeouts

	Various System-Timeout-Settings
s RPC (Remote Procedure Call)	Time, after expiration a COM- or DCOM function call (i.e. to an OPC-Server or to a VB-Application (Client)) will be judged as incorrect. After time expiration the existing connection to the communication partner will be cancelled. With OPC-Servers, after a certain period of time, specified under <b>Auto-Restart</b> , the OPC-Server will be restarted. If the connection to a VisiWinNET-Client is abandoned, the client will try to establish the connection again.
s OPC Start	Time, after expiration the system generates an error if the OPC Server doesn't start. An OPC server has to answer the status requests during this period with "OPC_STATUS_RUNNING" or "OPC_STATUS_TEST".
S OPC Status	Time, after expiration the system generates an error if the OPC Server doesn't answer with his configuration status ("OPC_STATUS_NOCONFIG" or "OPC_STATUS_SUSPENDED").
s Auto Restart	Period of time, upon expiration an OPC-Server will be restarted if the connection was abandoned. The OPC-Server is inquired cyclic for its status, with the "AutoRestart"-time, even when the data transfer is running. Thus, a lapse of the OPC-Server can be diagnosed.

## Modes of Diagnostic

	Which types of diagnosis are to be switched on/off
Log book	If selected, all system output created in the system will be saved in the file, specified under <b>logbook</b> .
Message-Boxes	With a system fault a message dialog appears on the display including the error message content and must be acknowledged. (The system runs in the background, all messages, which occur parallel are written into the logbook).
Alarm	With a system fault an entry is created in the Alarm system as well (Alarm list, Alarm line).
Beep	With a system fault an alarm signal is heard.

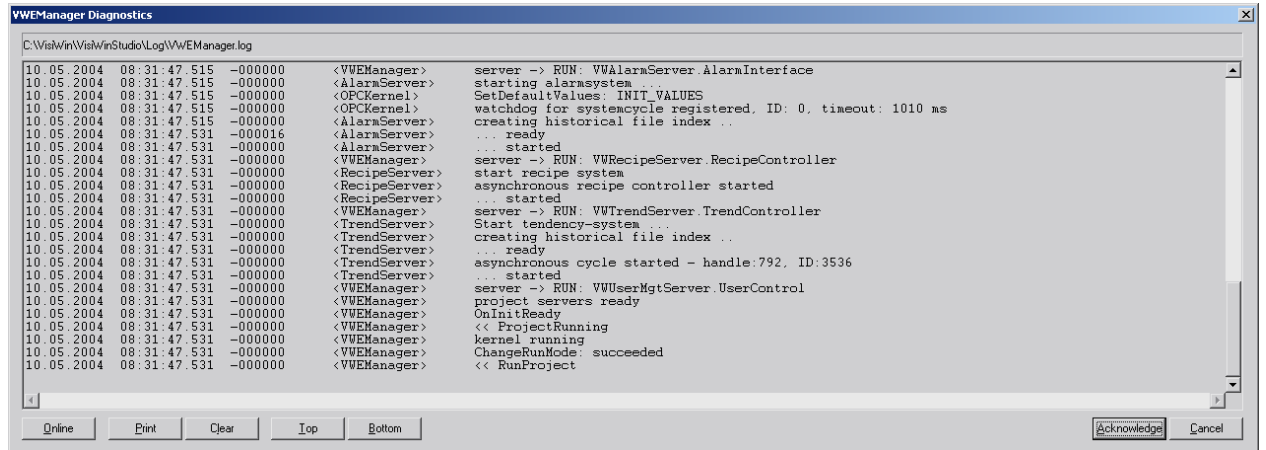
## Menu-Hotkey

The main menu of the VWN-Manager can also be shown through the indicated key combination (i.e. if a mouse is not available).

<b>Logbook</b>	Circular cache	The logbook is designed as a circular cache i.e. if the content exceeds the value specified in the "Size kB" field the oldest entries are overwritten.
	by the day	Every day a new file is created. In the process the date of the log file is added to the file name.
	by the hour	Every hour a new file is created. In the process the date and time of the log file are added to the file name.
	Size kB	Determines the maximum size of the log file. The size is adjustable between 10kB and 2MB.
	File name	The file name (including the path indication) of the created logbook. This is saved in simple text format.
<b>Debug output</b>		Via this button a dialog is opened allowing the selection of additional diagnosis output for particularly error-prone system commands. If support is required additional options can be activated here following instructions by the INOSOFT Hotline.

## 2.2.4 Diagnosis (Log book display)

Within the diagnosis the last part of the entire log book (the last 32 Kbytes of 1Mbyte max. log book size) can be inspected. Thus, information about the system status and queuing system errors is provided. In chap. 2.3 an example log book is shown with several respective explanations.



The screenshot shows a window titled "VWEManager Diagnostics" with a scrollable log area. The log contains the following text:

```

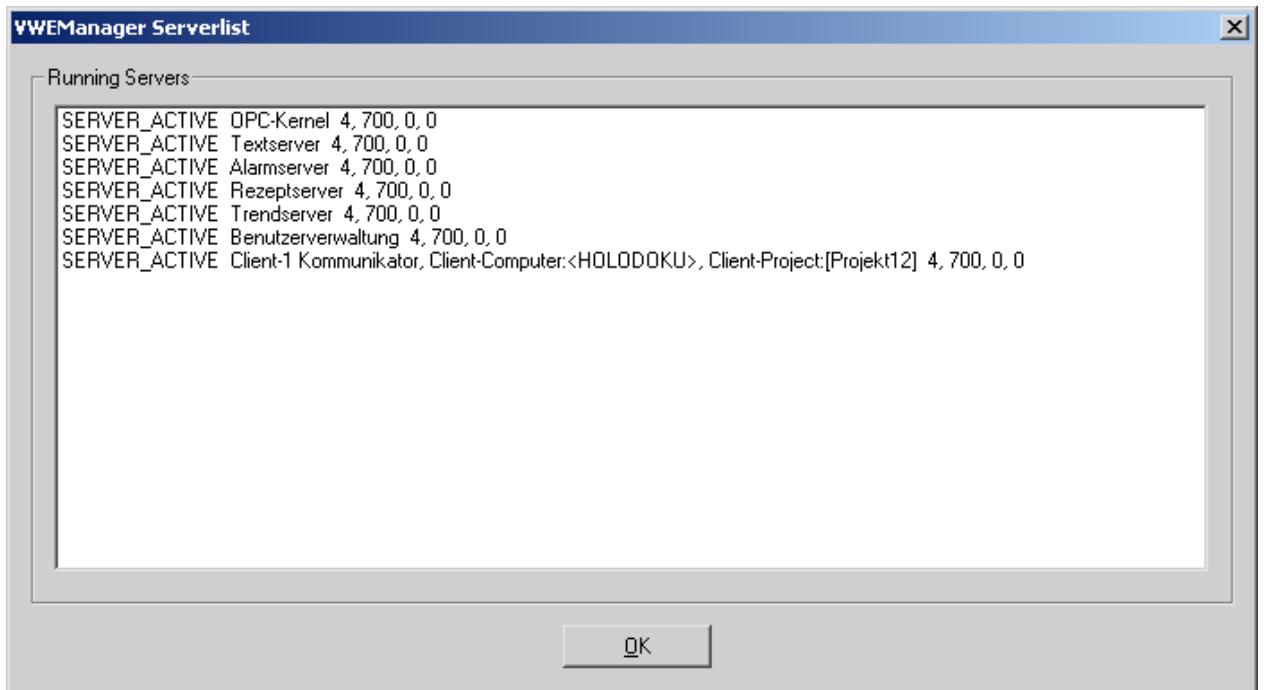
C:\VisiWin\VisiWinStudio\Log\VWEManager.log
10 05 2004 08:31:47.515 -000000 <VWEManager> server -> RUN: VWAlarmaServer.AlarmaInterface
10 05 2004 08:31:47.515 -000000 <AlarmaServer> starting alarmssystem ...
10 05 2004 08:31:47.515 -000000 <OPCKernel> SetDefaultValues: INIT_VALUES
10 05 2004 08:31:47.515 -000000 <OPCKernel> watchdog for systemcycle registered, ID: 0, timeout: 1010 ms
10 05 2004 08:31:47.515 -000000 <AlarmaServer> creating historical file index ...
10 05 2004 08:31:47.531 -000016 <AlarmaServer> ... ready
10 05 2004 08:31:47.531 -000000 <AlarmaServer> ... started
10 05 2004 08:31:47.531 -000000 <VWEManager> server -> RUN: VWRecipeServer.RecipeController
10 05 2004 08:31:47.531 -000000 <RecipeServer> start recipe system
10 05 2004 08:31:47.531 -000000 <RecipeServer> asynchronous recipe controller started
10 05 2004 08:31:47.531 -000000 <RecipeServer> ... started
10 05 2004 08:31:47.531 -000000 <VWEManager> server -> RUN: VWTrendServer.TrendController
10 05 2004 08:31:47.531 -000000 <TrendServer> Start tendency-system ...
10 05 2004 08:31:47.531 -000000 <TrendServer> creating historical file index ...
10 05 2004 08:31:47.531 -000000 <TrendServer> ... ready
10 05 2004 08:31:47.531 -000000 <TrendServer> asynchronous cycle started - handle:792, ID:3536
10 05 2004 08:31:47.531 -000000 <TrendServer> ... started
10 05 2004 08:31:47.531 -000000 <VWEManager> server -> RUN: VWUserMgtServer.UserControl
10 05 2004 08:31:47.531 -000000 <VWEManager> project servers ready
10 05 2004 08:31:47.531 -000000 <VWEManager> OnInitReady
10 05 2004 08:31:47.531 -000000 <VWEManager> << ProjectRunning
10 05 2004 08:31:47.531 -000000 <VWEManager> kernel running
10 05 2004 08:31:47.531 -000000 <VWEManager> ChangeRunMode: succeeded
10 05 2004 08:31:47.531 -000000 <VWEManager> << RunProject
  
```

At the bottom of the window, there are buttons for "Online", "Print", "Clear", "Top", "Bottom", "Acknowledge", and "Cancel".

- Online**            The log book display can be switched between Offline-Mode (standing display, Scrolling ability) and Online-Mode (refresh, display of incoming system messages)
- Print**             Log book printout on the default printer
- Clear**             Deletion of the entire log book
- Top**                Go to the beginning of the log book
- Bottom**            Go to the end of the log book
- Acknowledge**     Acknowledge current system fault (red flashing of VWN-Manager will disappear, the system alarm will be acknowledged in the alarm list/-line)

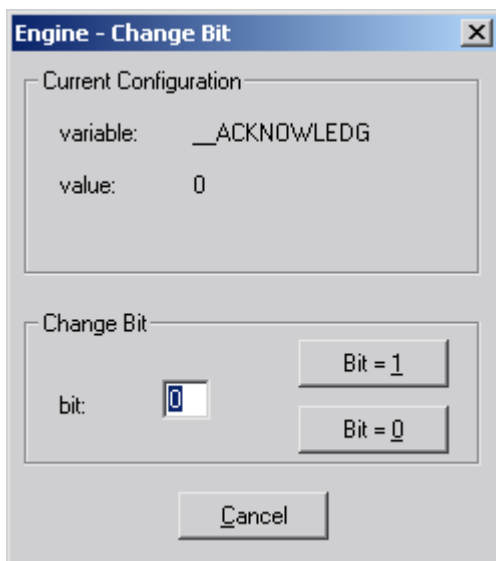
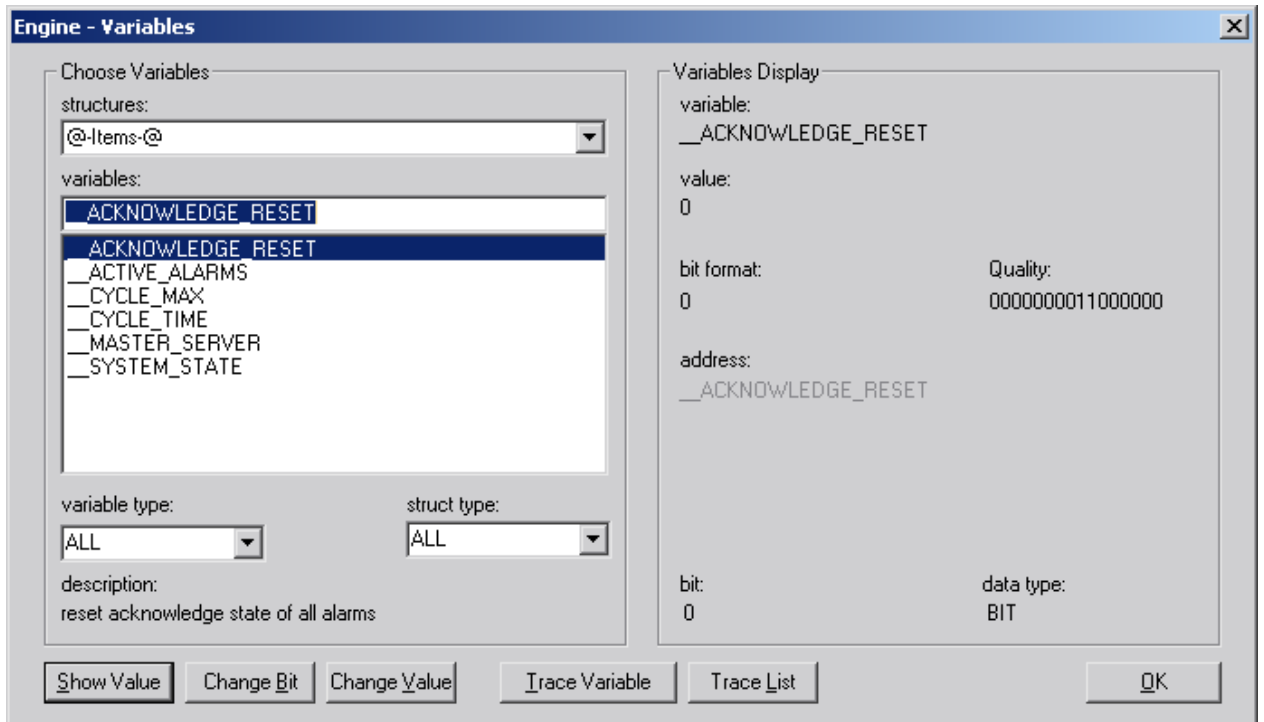
### 2.2.5 Server list

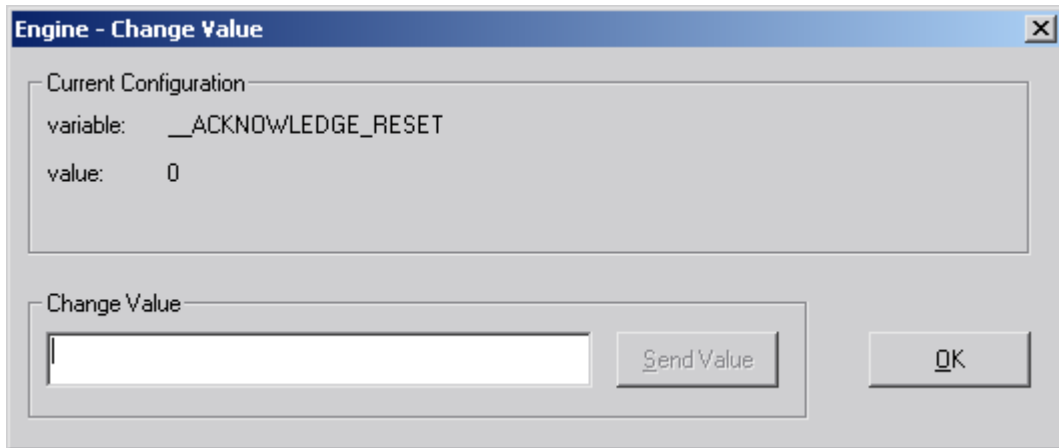
A list including the VWN-Servers, started at the moment, the logged-on client applications and the used VWEEngine is being displayed with current state and Release number.



### 2.2.6 VWEEngine

Dialog for display and change of process variables (Items).





<b>Variable selection</b>		The variable (VWItem) to be displayed or changed can be selected here.
Structures		Structures, created in the process variable definition table, or else all single variables („@-Items-@“) can be selected.
Variables		Structure members or single variables can be selected.
Variable type		Only variables of a certain data type are listed.
Structure type		<i>Obsolete</i>
<b>Variable display</b>		Information about a variable (VWItem) and the current variable value is displayed.
Variable		Variable name (ItemID within the VWEngine)
Value		Current value
Bit format		Current value in binary format
Address		Respective ItemID within the OPC-Server or address in the VisiWin-driver of the variable
<b>View</b>		The value of the selected variable will be displayed in the <b>variable view</b> .
<b>Change Bit</b>		A single bit of an variable can be changed
Bit		Bit number to be set
Bit = 1		Bit is set to „1“
Bit = 0		Bit is set to „0“
<b>Change value</b>		The variable value can be changed
Change value		The new variable value

**Track variable**

Adds the variable selected in the variable selection to the tracking list.

**Tracking list**

Opens the dialog for editing the tracking list. All variables in the list are "tracked" i.e. all VWEngine actions involving these variables (import of changes from the communication component, logon/logoff incidents from the clients, ...) are automatically recorded in the log files.

The dialog offers the options of deleting the entire tracking list or individual variables.

**2.3 VWN-Manager diagnosis (Server Log book)**

In the log book of the VWN-Manager all proceedings and system faults, which occur in the data collecting- and administration system during the application runtime, can be followed. According to the configuration (also see 2.2.3) the log book can have **various looks**. A typical example is shown here (manual VWN-Manager start on the Server data processor with project „VisiTest“):

File: C:\VisiWin\VisiWinNET\Log\VWNManager.log

```

09.01.2002 17:47:17.390 <VWN-Manager> System is being initialized
09.01.2002 17:47:25.371 <VWN-Manager> IDLE -> DESIGN: VisiTest
09.01.2002 17:47:25.371 <VWN-Manager> RUNFORDESIGN
09.01.2002 17:47:25.492 <VWN-Manager> Start kernel
09.01.2002 17:47:25.842 <VWEKernelOPC> Connect to OPC-Server: VWOPC.Demo.1
09.01.2002 17:47:25.972 <VWEKernelOPC> OPC-Server (VWOPC.Demo.1) supports
*IOPCShutdown-Interface*, Shutdown connected
09.01.2002 17:47:25.972 <VWEKernelOPC> OPC-Server (VWOPC.Demo.1) is running
09.01.2002 17:47:26.173 <VWEKernelOPC> Group "OLK2_Standard" in OPC-Server
"VWOPC.Demo.1" created - demanded scan rate:
250, assigned scan rate: 300
09.01.2002 17:47:26.243 <VWEKernelOPC> Status in group "OLK2_Standard" changed in
OPC-Server "VWOPC.Demo.1" - Status: ACTIVE,
assigned scan rate: 300
09.01.2002 17:47:26.463 <VWEKernelOPC> Software protection check: 20000 Power tags
allowed, 414 existing Power tags
09.01.2002 17:47:26.463 <VWEKernelOPC> Software protection check: 1000 interfaces
allowed, 1 existing interface
09.01.2002 17:47:26.583 <VWN-Manager> VWN-Server -> DESIGN:
VWTextServer.TextController
09.01.2002 17:47:26.603 <VWN-Manager> VWN-Server -> DESIGN:
VWAlarmServer.AlarmInterface

```

```

09.01.2002 17:47:26.824 <VWN-Manager> VWN-Server -> DESIGN:
VWTrendServer.TrendController

09.01.2002 17:47:26.904 <VWN-Manager> ChangeRunMode: successful

09.01.2002 17:47:26.904 <VWN-Manager> DESIGN -> RUN: Visits

09.01.2002 17:47:26.924 <VWN-Manager> VWN-Server -> RUN: VWTextServer.TextController

09.01.2002 17:47:26.924 <VWN-Manager> VWN-Server -> RUN:
VWAlarmServer.AlarmInterface

09.01.2002 17:47:26.924 <VWN-Manager> VWN-Server -> RUN:
VWTrendServer.TrendController

09.01.2002 17:47:26.924 <VWN-Manager> Kernel runs

09.01.2002 17:47:26.934 <VWEKernelOPC> SetDefaultValues: INIT_VALUES

09.01.2002 17:47:26.944 <VWN-Manager> >> ProjectRunning

. . .

09.01.2002 18:47:50.769 ! <VWEKernelOPC> OPC-Server abnormal terminated: VWOPC.Demo.1

09.01.2002 18:47:50.769 <VWEKernelOPC> Try to disconnect from OPC-Server:
VWOPC.Demo.1

. . .

09.01.2002 18:48:00.784 <VWEKernelOPC> Try to reconnect to OPC-Server: VWOPC.Demo.1

09.01.2002 18:48:00.964 <VWEKernelOPC> Connect to OPC-Server: VWOPC.Demo.1

09.01.2002 18:48:01.204 <VWEKernelOPC> OPC-Server (VWOPC.Demo.1) supports
*IOPCShutdown-Interface*, Shutdown connected

09.01.2002 18:48:01.204 <VWEKernelOPC> OPC-Server (VWOPC.Demo.1) is running

09.01.2002 18:48:01.204 <VWEKernelOPC> Successfully reconnected to OPC-Server:
VWOPC.Demo.1

09.01.2002 18:48:01.284 <VWEKernelOPC> Group "OLK2_Standard" in OPC-Server
"VWOPC.Demo.1" created - demanded scan rate:
250, assigned scan rate: 300

09.01.2002 18:48:01.465 <VWEKernelOPC> Status in group "OLK2_Standard" changed in
OPC-Server "VWOPC.Demo.1" - Status: ACTIVE,
assigned scan rate: 300

09.01.2002 18:48:01.465 <VWEKernelOPC> Item reconnection succeeded - OPC-Server:
VWOPC.Demo.1

09.01.2002 18:48:01.465 <VWEKernelOPC> SetDefaultValues (VWOPC.Demo.1): ERROR_VALUES

. . .

09.01.2002 19:48:29.197 <VWN-Manager> RUNFORREDESIGN

09.01.2002 19:49:29.197 <VWEKernelOPC> Transfer of "OPCShutdown" to OPC-Client: 1

```

```

09.01.2002 19:49:29.197 <VWN-Manager> VWN-Server -> STOP:
VWTextServer.TextController
09.01.2002 19:49:29.197 <VWN-Manager> VWN-Server -> STOP:
VWAlarmServer.AlarmInterface
09.01.2002 19:49:29.197 <VWN-Manager> VWN-Server -> STOP:
VWTrendServer.TrendController
09.01.2002 19:49:29.347 <VWEKernelOPC> SetDefaultValues: EXIT_VALUES
09.01.2002 19:49:29.347 <VWN-Manager> Kernel stopped
09.01.2002 19:49:29.347 <VWN-Manager> STOP
09.01.2002 19:49:29.347 <VWN-Manager> VWN-Server -> EXIT:
VWTextServer.TextController
09.01.2002 19:49:29.377 <VWN-Manager> VWN-Server -> EXIT:
VWAlarmServer.AlarmInterface
09.01.2002 19:49:30.379 <VWN-Manager> VWN-Server -> EXIT:
VWTrendServer.TrendController
09.01.2002 19:49:30.479 <VWEKernelOPC> Try to disconnect from OPC-Server:
VWOPC.Demo.1
09.01.2002 19:49:30.579 <VWEKernelOPC> Successfully disconnected from OPC-Server:
VWOPC.Demo.1
09.01.2002 19:49:31.180 <VWN-Manager> DESIGN -> IDLE: VisiTest
09.01.2002 19:49:32.211 <VWN-Manager> Running down of system
09.01.2002 19:49:32.221 <VWN-Manager> ... closed

```

### The example log book includes following information:

Date	Time + ms	F Source	Text entry
------	-----------	----------	------------

At 17:47:17.390 on January 09th. 2002 the system was started, Text administration, Alarm system and Archive system were initialized.

At 17:47:26.944 the system was booted up completely and in "Run"-Mode.

At 18:47:50.769 the connection to the VisiWin-Demo-OPC-Server abandoned.

At 18:48:00.784 reconnection to the VisiWin-Demo-OPC-Server was tried (10 s **Auto-Restart** time setting (also see chap. 2.2.3)).

At 18:48:01.465 it succeeded, default values for the error case were set successfully.

At 19:48:29.197 the instruction for running down the system was given.

At 19:49:32.221 the system was run down completely.

## 2.4 The VWN-Manager as OPC-Server

The VWEngine itself is structured as OPC-Server. Therefore the VWEngine variables (Items) can be accessed by any OPC-Client with only little restriction. All common interfaces (Browse items, item logon, synchronous and asynchronous read- and write instructions) are supported.

The ProgID of the VWEngine, independent of the Release number, reads as follows: „VisiWinNET.OPCServer“ (VisiWinNET OPC-Server V2.1).

With item browsing the ItemID's or alias names are presented according to the configuration.

Following restriction applies with the VWEngine operation:

- The project can only be initiated through a VisiWinNET-VB-Application or else manually (also see 1.2.2). Only then an OPC-Client can connect to the VWEngine. If the VWEngine is not yet started, the OPC-Client receives an error message „CO\_E\_APPNOTFOUND“ with the creation of the OPC-Server Object. (0x800401F5, Application not yet started).
- Only one OPC-Client at a time can connect to the VWEngine, additionally to the VisiWinNET-Clients.
- If the VWEngine is run down through the VB-Application or manually, the connection to the OPC-Client will be disconnected.
- The VWEngine does not support the OPC-CALLR-Interface for dynamic creation of items.

### 3 Error messages

Possible error messages of the system in the diagnosis (apportioned by descent):

#### 3.1 Alarm system („VW-Alarm Server“):

Nr	Error text	Description	Remedy
101	Speicher geplatzt	System memory not sufficient	System error, no unoccupied Windows-memory capacity, Task-Manager -> check system performance
110	Access to the VWE-Kernel	The VWEngine was not yet started completely	Check log file of previous error
111	Variable X could not be logged on; Variable to be acknowledged	The <b>acknowledgement variable</b> X, listed in the alarm group definition could not be found in the process database (Use of capital and small letters?)	Select variable again
112	Variable X could not be logged on; Deactivation variable	The <b>deactivation variable</b> X, listed in the alarm group definition could not be found in the process database (Use of capital and small letters?)	Select variable again
113	Variable X could not be logged on; Status variable	The <b>status variable</b> X, listed in the alarm group definition could not be found in the process database (Use of capital and small letters?)	Select variable again
114	Variable X could not be logged on; Priority variable	The <b>priority variable</b> X could not be found in the process database (Capital and small letters?)	Select variable again
115	Alarm X could not be allocated to the alarm class Y	The alarm class Y of this alarm X could not be found	Check alarm affiliation to a alarm class
116	Variable X could not be logged on, Alarm variable	The <b>event variable</b> X, listed in the alarm definition could not be found in the process database (Use of capital and small letters?)	Select variable again
117	Variable X could not be logged on, Acknowledgement variable	The <b>acknowledgement</b> variable X, listed in the alarm definition could not be found in the process database (Use of capital and small letters?)	Select variable again
118	Variable X could not be logged on, Status variable	The <b>status variable</b> X, listed in the alarm definition could not be found in the process database (Use of capital and small letters?)	Select variable again
119	DB-Template was not found in the resource	The template for the historical alarm archives could not be found in the resource of the alarm server	Alarm server (VWAlarmServer.DLL) <b>neu aufspielen und registrieren</b>
120	DB-Template in the resource incorrect	The template for the historical alarm archives was destroyed in the resource of the alarm server	Alarmserver (VWAlarmServer.DLL) Install and register again
121	DB-Template in the resource; Access denied	The template for the historical alarm archives could not be read out in the resource of the alarm server	Alarmserver (VWAlarmServer.DLL) neu aufspielen und registrieren
122	DB could not be created: X	Historical alarm archive X could not be created	Check indicated path and file name (the file might be write-protected?)
123	Access to the IndexTextServer failed	In this project the text server was not started, does not exist or else is not registered (required for language-switchable alarm text)	VWTextServer.DLL neu aufspielen und registrieren oder unter „VisiWinNET -> Project properties -> Server components -> activate VWLanguage“

Nr	Error text	Description	Remedy
124	Access to the VWS-configuration failed	Access to the project database ("Project name.VWS") through VisiWinNET.CfgAccess.EXE failed	VisiWinNET.CfgAccess.EXE <b>neu aufspielen</b> und registrieren
125	Archive-Trigger variable not specified (X), historical alarms cannot be relocated	In the alarm configuration ("Alarm Editor -> Tools -> Configuration") TRIGGER was selected as <b>file change event</b> , but not <b>Trigger variable</b> was input	Select variable again
126	Archive-Trigger variable could not be logged on (X), historical alarms cannot be relocated	In the alarm configuration ("Alarm Editor -> Tools -> Configuration") TRIGGER was selected as <b>file change event</b> , but the <b>Trigger variable</b> was not found in the process database	Select variable again
128	Expand File name, wrong formatting with X, current parameter: n, existing number of parameters: m	Wrong format label (n. Parameter of m) with historical archive name ("Alarm Editor -> Tools -> Configuration -> File name") found	Enter file name again
129	Formatting error, data types incompatible - parameter: n Formatting: c	The data type of the indicated parameter is incompatible to the selected formatting, historical archive name ("Alarm Editor -> Tools -> Configuration -> File name")	Enter file name again
130	Parameter-error in the file name n: unknown VW-Variable: X	The indicated parameter (Variable, Item) cannot be found in the process database, historical archive name ("Alarm Editor -> Tools -> Configuration -> File name")	Select variable again
131	Table X in Y could not be opened	The indicated table X could not be found in the process database Y	System error, call Inosoft hotline
133	AlarmServer-lock could not be created	Memory for access lockout (semaphore) could not be created	System error, no free Windows-memory, Task-Manager -> Check system performance
134	"Indextexts in Indextexts" are not supported with language-independent alarm management (Indextext X).	The formatting ,@I' and ,@G' are not supported with the historical archive name creation ("Alarm Editor -> Tools -> Configuration -> File name")	Enter file name again
135	Table X in the project database Y could not be opened	The database table X could not be found in the project database Y (extended, user-defined alarm information)	Structure of the user-defined alarm information was not created correctly -> „Free parameter sets“ in the alarm definition
136	Database key X could not be found the table Y in the project database Z.	The database index X could not be found in the database table Y in the project database Z (extended, user-defined alarm information)	Structure of the user-defined alarm information was not created correctly -> check „Free parameter sets“ in the alarm definition
137	Alarm output channel X could not be found in the table Y in the project database Z	The free parameter X could not be found in the database table Y in the project database Z (extended, user-defined alarm information)	Structure of the user-defined alarm information was not created correctly -> check „Free parameter sets“ in the alarm definition
138	Alarm number X with alarm output channel Y could not be found in the table Z in the project database W	The additional information (free parameter Y) to this alarm X could not be found in the database table Y in the project database Z (extended, user-defined Alarm information)	Structure of the user-defined alarm information was not created correctly -> check „Free parameter sets“ in the alarm definition
139	Alarm could not be saved in X	The data set to be archived (historical alarm) could not be saved in the indicated archive X	Check path- and file name of the indicated file

### 3.2 Trend- / Archive system („VW-Trendserver“):

Nr	Error text	Description	Remedy
101	Speicher geplazt	System-Memory is not sufficient	System error, no more free Windows-memory, Task-Manager -> check system performance
110	Access to the VWE-Kernel	The VWEngine was not yet started completely	Check log file of previous error
111	Variable X could not be logged on, Trigger variable	The <b>Trigger variable X</b> , specified in the archive definition -> <b>Recording</b> could not be found in the process database (Use of capital and small letters?)	Select variable again
112	Variable X could not be logged on, Start-Stop-Variable	The <b>Start-/Stop variable X</b> , specified in the archive definition -> <b>Recording</b> could not be found in the project database (Use of capital and small letters?)	Select variable again
113	Variable X could not be logged on, Reset-Variable	The <b>Reset- variable X</b> , specified in the archive definition -> <b>Recording</b> could not be found in the process database (Use of capital and small letters?)	Select variable again
114	Variable X could not be logged on, X-Axis-Variable	The <b>X-Axis variable X</b> , specified in the archive definition -> <b>Recording</b> could not be found in the process database (Use of capital and small letters?)	Select variable again
115	Trend X could not be allocated to the archive Y	The archive to the indicated trend could not be found in the archive definitions	Check archive name
116	Variable X could not be logged on; trend variable	The <b>Trend variable X</b> , specified in the trend definition -> <b>Standard</b> could not be found in the process database (Use of capital and small letters?)	Select variable again
117	Variable X could not be logged on, maximum variable	The <b>Maximum variable X</b> , specified in the trend definition -> <b>Recording</b> could not be found in the process database (Use of capital and small letters?)	Select variable again
118	Variable X could not be logged on, minimum variable	The <b>Minimum variable X</b> , specified in the trend definition -> <b>Recording</b> could not be found in the process database (Capital and small letters?)	Select variable again
119	Variable X could not be logged on, maximum substitution value variable	The <b>maximum substitution value variable X</b> , specified in the trend definition -> <b>Recording</b> could not be found in the process database (Capital and small letters?)	Select variable again
120	Variable X could not be logged on, minimum substitution value variable	The <b>minimum substitution value variable X</b> , specified in the trend definition -> <b>Recording</b> could not be found in the process database (Capital and small letters?)	Select variable again
121	Variable X could not be logged on, error-value variable	The <b>error substitution value variable X</b> , specified in the trend definition -> <b>Recording</b> could not be found in the process database (Capital and small letters?)	Select variable again

Nr	Error text	Description	Remedy
122	Variable X could not be logged on, hysteresis variable	The <b>hysteresis variable X</b> , specified in the trend definition -> <b>Recording</b> could not be found in the process database (Capital and small letters?)	Select variable again
123	Asynchronous trend cycle could not be started	The trend for the asynchronous data recording could not be started.	Call Inosoft Hotline
124	Trend archive full X - Trend Y	In the trend Y in the archive X the default number of data records is reached, but no swapping-out possibility is given.	Check file change event in archive definition -> <b>Format</b>
125	Variable X could not be logged on, swapping-out variable	The <b>file trigger variable X</b> , specified in the archive definition -> <b>Format</b> could not be found in the process database (Capital and small letters?)	Select variable again
126	Archive X could not be opened Y times.	In the archive X, Y times no new data record could be saved	Is the file being accessed from another process at the same time, or is the file write-protected?
127	Asynchronous trend cycle could not be stopped - Handle:X ID:Y	The trend with handle X and ID Y for the asynchronous data recording is waiting for an event and cannot be closed	The trend will be closed automatically external if necessary, possibly the latest data record will not be saved correctly
128	Asynchronous trend cycle could not be stopped regularly	The trend for asynchronous data recording is waiting for an event and cannot be closed	The trend will be closed external automatically if necessary, possibly the latest data record will not be saved correctly
129	Trend data request – wrong archive-ID: X	A trend control requests recorded data of a not existing archive.	Check archive property in the trend control
130	Trend data request - Interval provides wrong type: X	The request interval of a trend control for recorded data provides the wrong data type (i.e. of an archive, provided with <b>X-axis variable specification</b> data of exact time 1 to exact time 2 is inquired, correct would be of x-value 1 to x-value 2)	Check between-/and-property in the trend control
132	? Asynchronous trend cycle started already - Handle:X, ID:Y	The trend for asynchronous data recording was not closed properly with a former start	Information message
133	Archive X cannot be saved, blank VisiWinEngine.doc	The <b>file name</b> specified in the archive definition -> <b>Format</b> is expanded to a blank file name (i.e.: file name from text variable, text variable is blank)	Check file name declaration
135	In a ring buffer archive X (Archive-ID: X, Trend-ID: Y) data is to be saved, though the size is specified with 0 entries	In an archive of the <b>Type</b> „Ring buffer“ 0 was stated as ring buffer size	Check ring buffer size declaration
136	In an archive X (Archive-ID: X, Trend-ID: Y) data is to be saved, though no known type is stated (Sequence archive, Ring buffer archive, etc.)	With the archive definition X another <b>type</b> as „Ring buffer“ and „Sequence archive“ was stated.	Check archive type
137	VWS-Configuration access failed	Project database access (“ <i>Project name.VWS</i> ”) through VisiWinNET.CfgAccess.EXE failed	Start and register VisiWinNET.CfgAccess.EXE again
138	Archive definition not found - ArchiveID:X	A trend control inquires recorded data of a not existing archive.	Check Archive-Property in the trend control
139	Trend definition not found - ArchiveID:X TrendID:Y	A trend control inquires recorded data of a not existing trend of archive Y	Check Trend-Property in the trend control
140	Table X in Y could not be opened	The stated table X could not be found in the project database Y	System error, call Inosoft hotline

Nr	Error text	Description	Remedy
141	Data set X in the table Y in Z could not be changed	An archive definition X could not be changed in the table Y in the project database Z	System error, call Inosoft hotline
142	Manual file change, possible only with event-controlled archives: X (ID: Y)	Creation of new archive files through the trend interface is possible only with the <b>file change event</b> „Never“	Check <b>file change event</b>
143	Watch-dog for asynchronous trend cycle: logon or ping failed	Watch-dog for the asynchronous data recording trend could not be activated	System error, call Inosoft hotline
144	Formatting error, Types incompatible - Parameter: X Formatting: Y	The data type of the specified parameter is incompatible to the selected formatting, Archive definition -> <b>Format</b> -> <b>file name</b> ("Alarm Editor -> Tools -> Configuration -> File name")	Re-enter file name
145	Parameter-error in the index text X: VW-Variable unknown: Y	The stated parameter (Variable, Item) cannot be found in the process database, Archive definition -> <b>Format</b> -> <b>File name</b>	Select variable again
146	ExpandText, wrong formatting with X, current Parameter: X, existing number of parameter sets: Y	Wrong formatting characters found (n. parameter of m) with archive definition -> <b>Format</b> -> <b>File name</b>	Re-enter file name
148	Data type of variable X could not be determined	The <b>Trend variable</b> data type could not be determined correctly	Stated variable in trend definition -> Check <b>Standard</b> -> <b>Trend variable</b>
149	File could not be archived historical (Rename X to Y), Error: Z	With relocation of an archive file (Rename X to Y) an error Z occurred	The file already exists or it is write-protected or else the file name contains illegal characters or a wrong path declaration. Check the stated file names.

### 3.3 Recipe- / Format administration („VW-Recipe server“):

Nr	Error text	Description	Remedy
101	Speicher geplatzt	System memory not sufficient	System error, <b>kein Windows-Speicher mehr frei</b> , Task-Manager -> Check system performance
102	This server is not supporting VisiWin32!	The recipe server can only be used with VisiWinNET	Recipe server declaration on a VW32-Channel is inadmissible
110	VWE-Kernel could not be found	The VWEEngine was not yet started completely	Check Log file on previous error
111	VWS-Configuration access failed	The project database access ("Project name.VWS") through VisiWinNET.CfgAccess.EXE failed	Start VisiWinNET.CfgAccess.EXE again and register
112	Stated table X in Y not found	The stated table X could not be found in the project database Y	System error, call Inosoft hotline
113	Recipe definition variable X could not be logged on	The variable X, specified in the recipe definition -> <b>ItemID</b> could not be found in the process database (Use of capital and small letters?)	Select variable again
114	Accessory recipe class (X) to the recipe variable Y not found	With recipe variable assignment to a recipe definition an error occurred	Check recipe variable (ItemID) in recipe definition
115	Recipe variable X to the recipe class Y could not be logged on	Sub-recipe name variable (Recipe definition -> ???) X to the recipe definition Y could not be found in the process database (Use of capital and small letters?)	Select variable again
116	In the recipe class X (Y) no name variable is stated, though triggers are stated for the variable-controlled recipe administration. The recipe definition is incorrect and will not be activated.	In the recipe definition with the recipe -> <b>Load trigger</b> or <b>Save trigger</b> or <b>Read trigger</b> or <b>Write trigger</b> a variable is given, but not under recipe -> Standard -> <b>Recipe file name</b> . However, this is necessary or else the recipe name cannot be determined with the trigger setting	Select a recipe name variable under recipe -> Standard -> <b>Recipe file name</b>
117	Table X in the database Y could not be opened	The specified table X could not be found in the project database Y	System error, call Inosoft Hotline
119	Key Code X in table Y could not be found in the database Z	The database index X could not be found in the database table Y in the project database Z (extended, user-defined Alarm information)	Project database structure is not correct (possibly after update to a new Release)-> call Inosoft Hotline
120	Specified recipe class (X) could not be found in a recipe order (File name: Y)	An unknown recipe class was given for a load- or save order to (from) a file Y	The recipe interface was called with a wrong recipe class (Check VB-Source code)
121	Error with opening of the database X	The project database could not be accessed	Cannot find process database. (Write-protected ?)
122	Table could not be opened, table: X in database Y	The given table X could not be found in the project database Y	System error, call Inosoft Hotline
123	VWE-Kernel-Interface not available, abnormal termination	The VWEEngine was not yet started completely	Check log file on previous error
124	Data could not be saved, table: X in database Y	Error with opening of table X in recipe file Y	The file is possibly write-protected or the file name consists invalid characters or else a wrong path declaration

Nr	Error text	Description	Remedy
125	Blank recipe definition variable (X) stated for recipe class Y	Sub recipe name variable (Recipe definition -> ???) X for recipe definition Y was not given	Select variable
126	Blank recipe order (???, recipe class: X (Y)), file name: Z	An unknown recipe order for the recipe file Z of the recipe class X was started	Check VB-Source code with recipe interface call
127	No file name given to this recipe order (recipe class: X (Y))	No file name was given for a load- or save order for the recipe class X	Check VB-Source code with recipe interface call
128	Max. size (X) of the recipe order list reached (recipes cannot be worked off fast enough apparently), order (recipe class: Y (Z), file name: W) denied	The recipe order list is full (the size can be defined under Recipe definition -> Options -> Configuration -> <b>Number of orders at the same time</b> )	Reduce the recipe order frequency or adjust the recipe order list size (Recipe definition -> Options -> Configuration -> <b>Number of orders at the same time</b> )
129	COM-Memory for this inquiry cannot be created (X – recipe class: Y)	System-memory not sufficient	System error, kein Windows-Speicher mehr frei, Task-Manager -> Check system performance
130	Start of asynchronous recipe administration failed	Trend for asynchronous recipe processing could not be started	Call Inosoft Hotline
131	Recipe name cannot be determined or else is blank, Recipe class: X	Current recipe file name cannot be determined from the recipe name variable	Check recipe name variable specification in the recipe definition
132	Recipe name variable is of wrong data type, Recipe class: X	Current recipe file name cannot be determined from the recipe name variable	Check recipe name variable specification in the recipe definition (no valid recipe name can be determined from the given variable)
133	Scheduled value variable X login not possible, though a standard quantity is given (Recipe class: Y (Z))	The variable X, specified in the recipe definition -> Enhanced -> <b>Scheduled factor variable</b> could not be found in the process database (Use of capital and small letters?)	Select variable again
134	Scheduled quantity cannot be determined (Recipe class: X (Y))	With the inquiry of the current scheduled quantity target for recipe class X an error occurred.	Check recipe definition -> Enhanced -> <b>Scheduled factor variable</b> (possibly the data type is not valid, i.e.: text variable)
135	Error with XML-Component access	As file format for recipe files XML is selected (Recipe definition -> Options -> Configuration -> <b>XML</b> ), but the recipe files cannot be accessed correctly	XML-DOM was not set up correctly, is to be selected with the SetUp-wizard
136	Unknown error with XML-Component access	As file format for recipe files XML is selected (Recipe definition -> Options -> Configuration -> <b>XML</b> ), but the recipe files cannot be accessed correctly	XML-DOM was not set up correctly, is to be selected with the SetUp-wizard
137	DB-Template not found in the resource	The recipe file template in MSAccess-format (Recipe definition -> Options -> Configuration -> <b>MSAccess</b> ) could not be read from the resource of the recipe server	Set up and register recipe server (VWRecipeServer.DLL) again
138	Incorrect DB-Template in the resource	The recipe file template in MSAccess-format (Recipe definition -> Options -> Configuration -> <b>MSAccess</b> ) in the resource of the recipe server was destroyed	Set up and register recipe server (VWRecipeServer.DLL) again
139	DB-Template in the resource, access denied	The recipe file template in MSAccess-format (Recipe definition -> Options -> Configuration -> <b>MSAccess</b> ) could not be read from the resource of the recipe server	Set up and register recipe server (VWRecipeServer.DLL) again
140	Database could not be created: X	The recipe file X could not be created	Check specified path and file name (Possibly the file already exists and is write-protected?)

### 3.4 User administration („VWUserMgtServer“):

Nr	Error text	Description	Remedy
101	Access to VWE-Kernel	The VWEngine was not yet started completely	Check log file on previous error
111	Access to VWS-Configuration failed	Process database access (" <i>Project name.VWS</i> ") through VisiWinNET.CfgAccess.EXE failed	Set up and register VisiWinNET.CfgAccess.EXE again
112	Table X in process database Y could not be opened	The stated table X could not be found in the process database Y	System error, call Inosoft hotline
113	Checksum error with load of user class X	With load of user class X the internal checksum does not correspond	The user database was damaged or manipulated manually (either in the project file „ <i>Project name.VWS</i> “ or else in the runtime user database „ <i>Project name.RTS</i> “). The user class is to be deleted and created again.
114	Checksum error with load of authority class X	With load of authority class X an internal checksum does not correspond	The user database was damaged or manipulated manually (either in the project file „ <i>Project name.VWS</i> “ or else in the runtime user database „ <i>Project name.RTS</i> “). The authority class is to be deleted and created again.
119	DB-Template in the resource not found	The runtime user database template („ <i>Project name.RTS</i> “) could not be found in the resource of the user administration server	Set up and register the user administration server (VWUserMgtServer.DLL) again
120	Incorrect DB-Template in the resource	The runtime user database template („ <i>Project name.RTS</i> “) was destroyed in the resource of the user administration server	Set up and register the user administration server (VWUserMgtServer.DLL) again
121	DB-Template in the resource, access denied	The runtime user database template („ <i>Project name.RTS</i> “) could not be found in the resource of the user administration server	Set up and register the user administration server (VWUserMgtServer.DLL) again
122	DB could not be created: X	The runtime user database („ <i>Project name.RTS</i> “) X could not be created	Check specified path and file name (Possibly the file already exists and is write-protected?)

### 3.5 VisiWinEngine-Manager („VWN-Manager“):

Nr	Error text	Description	Remedy
110	Initializing event - Error: X	System memory not sufficient	System error, <b>kein Windows-Speicher mehr frei</b> , Task-Manager -> Check system performance
111	Main window could not be created	System memory not sufficient	System error, kein Windows-Speicher mehr frei, Task-Manager -> Check system performance
112	Wrong project logon:X Current project:Y	A VisiWinNET-Client tries logon to the VWN-Manager, but the VWN-Manager is started with another project already. Only one single VisiWinNET-Server-Project at a time can be started on a data processor.	With the Client Project, probably the data processor name or else the server project name was entered incorrect.
113	Error with start of project: System is not in design mode	During start of the VB-application, the VWN-Manager is not in the requested runtime mode.	With previous operation of the VWN-Manager it was not shut down properly. Check the VWN-Manager log file on occurred errors. Then, close the VWN-Manager in the VWN-Manager menu (also see 1.2.1) manually or else close the VWNManager.EXE in the task manager.
114	Error with project stop: System not in run mode	With VW-Application stop the VWN-Manager is not in the requested runtime mode.	During operation the VWN-Manager was closed prematurely. Check the VWN-Manager log file on occurred errors and afterwards close VB or Project name.EXE and restart.
115	Error: Registry key not found: Y	In the registry the specified registry key is missing or else the user authorities do not allow reading the key.	Set up runtime system again or else check user authorities
116	Start of VWE-Kernel: Kernel not found	VWEKernel is not registered or else does not exist	Set up and register VWEKernel again (VWEKernel.DLL with VWS-Projects with VW32-Kernel; VWEOPC.DLL with the rest)
117	Start of VWE-Kernel: IF not found	VWEKernel is registered incorrect	Set up and register VWEKernel again (VWEKernel.DLL with VWS-Projects with VW32-Kernel; VWEOPC.DLL with the rest)
118	VWE-Kernel stop: Kernel not found	VWEKernel is not registered or else does not exist	Set up and register VWEKernel again (VWEKernel.DLL with VWS-Projects with VW32-Kernel; VWEOPC.DLL with the rest)
119	VWE-Kernel stop: IF not found	VWEKernel is registered incorrect	Set up and register VWEKernel again (VWEKernel.DLL with VWS-Projects with VW32-Kernel; VWEOPC.DLL with the rest)
120	Server:X Version:Y could not be started	Stated VWN-Server X with Version Y could not be started (either not registered or not existing)	Set up and register stated VWN-Server again. Possibly check in the SetUp-wizard of files to be set up
121	Server:X Version:Y delivers unknown error	Stated VWN-Server X with Version Y could not be started correctly (Incorrect file or else previous version)	Set up and register stated VWN-Server again. Possibly check in the SetUp-wizard of files to be set up
122	Stated Server: X does not support the 'IVWService'-Interface	Stated VWN-Server X is registered incorrect or else does not support the „IVWService“-Interface for starting	Set up and register the specified VWN-Server again. Possibly the „IVWService“-Interface was not implemented correctly with a special created VWN-Server.
123	Communicator request: wrong parameter	The transferred interface communicator of the VB-Application is ZERO	Internal system error – call Inosoft Hotline

Nr	Error text	Description	Remedy
124	Communicator request: Communicator could not be started	The communicator (also see 1.1.4) to the VB-Application is not existing or else not registered	Set up and register the VWEComm.DLL again
125	Communicator request: Service-Interface is not supported	The communicator (also see 1.1.4) to the VB-Application is registered incorrect	Set up and register the VWEComm.DLL again
126	Communicator request: Communicator could not be initialized	With communicator start (also see 1.1.4) of the VB-Application an unknown error occurred	Set up and register the VWEComm.DLL again
127	Communicator request: Max. number of clients exceeded	Login attempt of more than 100 client applications	At the time the number of client applications on a server is limited to 100
128	Communicator deletion: wrong parameter	The transferred interface communicator of the VB-Application is ZERO	Internal system error – call Inosoft Hotline
129	Communicator deletion: Service-Interface is not supported	The communicator (also see 1.1.4) to the VB-Application is registered incorrect	Set up and register the VWEComm.DLL again
130	Communicator deletion: Communicator not on administration	<b>Logoff attempt</b> on the server of more client applications as there are logged in	With bad network quality, frequently unexpected termination between client and server can occur. Possibly the number of existing clients will be calculated wrong then. Check network.
142	Print error, WORDPAD not found	WordPad.EXE was not found on the data processor	The Microsoft-Application WordPad.EXE is used for log file printout. It is part of the standard Windows equipment. If the file does not exist or else cannot be found in the WINDOWS-directory, this error message will occur
143	General print error with WORDPAD: X	WordPad.EXE was found on the data processor, but an error occurred during printout.	Start WordPad.EXE manually and try printout again
145	Access to VWS-Configuration failed	Process database access (“ <i>Project name.VWS</i> ”) through VisiWinNET.CfgAccess.EXE failed	Set up and register VisiWinNET.CfgAccess.EXE again
146	Access to global Interface-table failed	GIT (GlobalInterfaceTable) instantiation within the VWN-Manager failed	Internal system error – call Inosoft Hotline
147	Fatal system error, no sign of life or else 10 x cycle exceeding of cycle: X	The watchdog reports that a monitored Thread (Cycle) has not reported back in the ten times set cycle time to the cycle controller and therefore does not work correctly. This can be the <b>main cycle</b> , the <b>asynchronous recipe administration</b> or else the <b>asynchronous data recording</b> . If a watchdog server is available in a project, it can be responded adequately (i.e.: Restart of project/ data processor).	Either a part of the system does not work correctly or else the cycle time set cannot be met. In this case the cycle time must be increased or the watchdog monitoring is to be set manually (also see 1.2.3). If no watchdog-server is available in the project, the monitoring can be deselected (also see 1.2.3).
148	Speicher geplätzt (Funktion: X)!	System-memory not sufficient	System error, kein Windows-Speicher mehr frei, Task-Manager -> Check system performance
149	Access to IndexTextServer failed	The TextServer „VWTextServer.DLL“ was not loaded, not found or else is not registered in the project, but is required for language-switching.	Set up and register VWTextServer.DLL again or else under „VisiWinNET -> Project properties -> Server components -> activate VWLanguage“

### 3.6 VisiWinEngine for VW-32 Projects („VWEKernel“):

Nr	Error text	Description	Remedy
102	Wrong data type	The reference to a variable or structure, used in this process database object is of wrong data type	Re-enter variable (structure)
103	Variable not defined	The variable or structure, used in this process database object is not existing any more	Re-enter variable (structure)
104	Double memory request	With the last project start the VW32-Kernel was not discharged orderly	Run down the project and delete process „VWEKernel.EXE“ using the task manager
105	Initializing error	With the process database object initializing an error occurred	Please note attached error handling
107	Driver not defined	The reference to a structure (driver), used in a structure variable definition is not existing (any more)	Re-enter structure
108	Data offset to big	The offset specification of a structure variable is bigger than the structure length	Enlarge structure- (driver-) length
111	Database not existing	The process variable database („Project name.DBF“) cannot be found	Compile process database again, or else check if the specified file is included in the runtime system setup
112	Memory not sufficient	With the specified function the system memory	Check object on correct data input / check system memory
115	Wrong file name	The specified VW32-driver or else the specified recipe was not found	Check data (input)
119	Configuration parameter is missing	The given entry was not found in the registry database under „HKEY_LOCAL_MACHINE/Software/Inosoft GmbH/VisiWin/4.0“	Register project again (in the VisiWinNET-Dialog under Enhanced)
125	Ext. driver does not reply	The specified VW32-driver was started, but does not (yet) take up its job	Check out specified VW32-driver individually with test address
129	Software protection was taken out	The software protection lock was taken out in running operation	Insert dongle again and restart project
130	Number of objects bigger than the software protection allows	The number of objects, limited by the hardware lock was exceeded with the process database design.	Upgrade dongle or else reduce number of objects in the process database
131	No software protection! The system runs as demo.	With project start no hardware lock was found.	Either the hardwarelock (Dongle) is missing or the hardwarelock driver was not set up correctly (Install VisiWinNET again or „DongleSetup.EXE“ under „\VisiWinNET\Dongle“ run)
132	The system ran as demo and shuts down now!	The system ran an hour without hardwarelock	Insert Dongle and restart system
139	Address error, number of variables to big	In a structure- or external variable address, a variable address string was not used orderly	Check the specified address string
140	Address error, number of variables to small	In a structure- or external variable address, a variable address string was not used orderly	Check the specified address string

Nr	Error text	Description	Remedy
142	Address error, variable not defined	In a structure or external variable address a variable address string was used, however the specified formatting variable is not (longer) existing	Check the specified address string
143	Address error, variable of wrong data type	In a structure or external variable address a variable address string was used, however the specified formatting variable is of wrong data type	Check the specified address string
144	Error with the definition of a read instruction on the driver	An unexpected error occurred with communication structure creation for the specified VW32-driver.	Call Insoft Hotline
145	Client could not be logged on, ClientID:X	More than 10 Client-Application logon attempts at the VW32Kernel	At this time the number of clients in use with the VW32Kernel is limited to 10.
146	Driver on UNIVERSAL X is not authorized for this software protection!	The specified VW32-Driver cannot be operated with this hardwarelock	For some VW32-Driver a special licensing is required
149	Life cycle monitoring for system cycle: logon or ping failed	Logon at the VWN-Manager Watchdog does not work correctly	Call Inosoft Hotline and forward the output error code
152	CONIN.CFG not found in the VisiWin-path declaration	With location of object information concerning an error output, a resource error occurred	Set up and register „VWEKernel.dll“ again or else call Inosoft Hotline
-	The connected Server does not support the interface IOPCServer.	The specified OPC-Server is not registered correctly	Register OPC-Server and „OPCProxy.DLL“ again
-	Cannot add a Private Group.	With creation of a Private Group an error occurred	Check OPC-Server on the output error
-	Cannot connect to the specified OPC Server.	Connecting to the specified OPC-Server, an error occurred	Check OPC-Server on the output error or else if the OPC-Server is located on another server, check the user rights
-	Cannot add the specified item.	With item creation in the private group an error occurred	Check OPC-Server on the output error
-	The connected Server does not support the interface IOPCAsyncIO.	Either the specified OPC-Server is not registered correctly or does not support the interface „IOPCAsyncIO“	Register OPC-Server and „OPCProxy.DLL“, again
-	The connected Server does not support the interface IOPCSyncIO.	Either the specified OPC-Server is not registered correctly or does not support the interface „IOPCSyncIO“	Register OPC-Server and „OPCProxy.DLL“, again
-	Cannot create an Advise Sinc class instance.	With creation of the asynchronous OPC-Server Communication a memory error occurred.	Check system memory
-	Cannot advise the recall handler (AsyncIO).	Either the specified OPC-Server is not registered correctly or else does not support the interface „IOPCAdviseSink“	Register OPC-Server and „OPCProxy.DLL“, again
-	Cannot advise the recall handler (AsyncIO2).	Either the specified OPC-Server is not registered correctly or else does not support the interface „IOPCDataCallback“	Register OPC-Server and „OPCProxy.DLL“ again
-	Cannot write the specified item.	With item writing to the OPC-Server an error occurred	Check OPC-Server on the output error
-	Cannot read the specified item.	With item read to the OPC-Server an error occurred	Check OPC-Server on the output error
-	OPC-Server not running.	After an adequate latency time the specified OPC-Server is not yet in "RUNNING"- or "TEST"-Mode	Individual OPC-Server start for test purposes

Nr	Error text	Description	Remedy
-	The connected Server does not support the interface IOPCGroupStateMgt.	Either the specified OPC-Server is not registered correctly or does not support the interface „IOPCGroupStateMgt“	Register OPC-Server and „OPCProxy.DLL,, again
-	Cannot activate the group for AsyncIO, no items read.	The state of the private group created, cannot be switched to „ACTIVE“	Check OPC-Server on the output error

### 3.7 VisiWinEngine for OPC-Projects („VWEKernelOPC“):

Nr	Error text	Description	Remedy
110	FormulaServer: pointer to GIT not existing	Internal error	Call Inosoft Hotline
111	Formula client – table X on project database could not be opened	The indicated table could not be opened in the project database	Check project database path: if the file is write-protected, set up project again
112	Formula server (X) could not be started	The specified VB-Formula server could not be started	Either register formula server or set up again
113	<b>Speicher nicht ausreichend, PARAM_SET</b>	<b>Missing system storage</b>	Check memory allocation in the task-manager
114	Unknown formula type, type:X of formula:Y in server:Z	VB-Properties for parameter transfer of wrong data type	Check VB-formula
115	<b>Speicher nicht ausreichend, IN_PARAMS oder OUT_PARAMS</b>	<b>Missing system memory</b>	Check memory allocation in the task-manager
116	Formula client – could not find AliasID "X" in the table "TvbAlias" in the project database	The project database is defective or else was converted incorrect from a former version.	Install project database again
117	Access to configuration failed	VisiWinNET.CfgAccess.EXE could not be found	Set up and register VisiWinNET.CfgAccess.EXE again
118	Shortage of memory space with item initializing X	<b>Missing system memory</b>	Check storage allocation in the task manager
119	Warning: OPC-Item (X) is not assigned to a group, value cannot be read	The item X could not be logged on to an OPC-Server or VW32-Driver orderly	Check item definition on the OPC-Server or else VW32-Driver
120	The system ran as demo version and terminates now!	The system ran for one our without software protection as demo version	Information
121	Unknown data type in the structure definition – Variable:X data type: Y	An unknown data type was found in a structure definition	Check the indicated variable in the structure definition
122	Bit number with bit variable X <0 or >7	The bit number with data type „VT_BIT“ can only assume the value between 0 and 7	Change bit number of item
123	CriticalSection - <b>Speicherfehler: X</b>	<b>Missing system memory</b>	Check storage allocation in the task manager
124	Unknown error in X	The function delivered an unknown error	Call Inosoft Hotline
125	PingOPCServer-Thread not finished, Error: X	The OPC-Server-State monitoring could not be finished	Delete the VWNManager.EXE in the task manager if necessary and restart project
126	Error with the VisiWin32-Driver start: X	An error occurred with start of the VW32-Driver	Start VW32-Driver in test mode only and check function
127	Error with OPC-Server start: X	An error occurred with start of the indicated OPC-Server	Start OPC-Server with test client or VWOPCAgent and check function

Nr	Error text	Description	Remedy
128	StartOPCClient-Thread finished, CoInitializeEx incorrect	The COM-System could not be initialized	Call Inosoft Hotline
129	Error with OPC-Server start, Timeout: X	Even after the start time set, the OPC-Server is still not in „RUN“- or „TEST“-Mode	Increase Start-Timeout in the server-configuration or else start OPC-Server with test client or VWOPCAgent and check function
130	StartOPCServer-Thread (X) not finished, error: %2!lu!	OPC-Server-Start routine could not be finished	Delete the VWNManager.EXE in the task manager if necessary and restart project
131	Shortage of memory space with X	Missing system memory	Check storage allocation in the task manager
132	Item-read error (X): Y – stream length incorrect (Scheduled: <0,Z> Actual: <A,B)	With an OPC-Server with structure transfer as „BYTESTREAM“ the given byte length of the item does not agree with the definition in the OPC-Server (VWS 0...Z, OPC-Server A...B)	Adapt structure definition
133	Item-read error (X): Y - Z	With item read from the OPC-Server an error occurred	Check OPC-Server
134	Item-write error (X): Y - Z	With item write from the OPC-Server an error occurred.	Check OPC-Server
135	OPC-Server terminated abnormal: X	The OPC-Server was not shut down orderly	Check OPC-Server
136	Dongle-error	With access to the software protection an error occurred	Call Inosoft Hotline
137	OPC-Server requires system shut down (X)	The OPC-Server started the „Shutdown“-event, VWS disconnected	Check OPC-Server
138	OPC-Server (X) cannot load the project - Error: 0xY (Z)	The Inosoft-OPC-Server is not configured for this project	Configure Inosoft-OPC-Server again
139	X-Thread (Y) not finished, Error: Z	The requested function could not be finished	Delete the VWNManager.EXE in the task manager if necessary and restart project
140	Item (asynchronous-) read error (X): Y – stream length incorrect (Scheduled: <0,Z> Actual: <A,B)	With an OPC-Server with structure transfer as „BYTESTREAM“ the indicated item byte length does not agree with the definition in the OPC-Server (VWS 0...Z, OPC-Server A...B)	Adapt structure definition
141	Cannot load the project	The project database could not be loaded	Call Inosoft Hotline
142	Connection to the OPC-Server cannot be established	With OPC-Server start an error occurred	Start OPC-Server with test client or VWOPCAgent and check function. If necessary register again
143	The connected server does not support the interface X	The indicated interface could not be found on the OPC-Server	Register OPCProxy.DLL in the\Windows\System (32)“-directory again or check OPC-Server
144	The connected simulation server does not support the interface	During OPC-Server simulation by the simulation server provided in the system an error occurred.	Call Inosoft-Hotline
145	Cannot connect the recall routine	A recall interface could not be found on the OPC-Server	Register OPCProxy.DLL in the\Windows\System (32)“-directory again or check OPC-Server
146	OPC-Server does not run (Server-State: X)	The OPC-Server is not in „RUN“- or „Test“-mode	Probably, there is a configuration error in the OPC-Server or else the connected PLC is not working

Nr	Error text	Description	Remedy
147	OPC-Server does not run (Server-State: X)	The OPC-Server is not in „RUN“- or „Test“-mode	Probably, there is a configuration error in the OPC-Server or else the connected PLC is not working
148	CoInitializeEx in the SetItemValue-Thread	The COM-System could not be initialized	Call Inosoft Hotline
149	Error with sending of "ShutdownRequest"	While closing the application the connected OPC-Servers are being notified of this event; However, an error occurred on the OPC-Server.	If the OPC-Server does not support the „IOPCShutdown“-Interface orderly, the OPC-configuration function can be switched off
150	Connecting from the "IOPCShutdown-Interface" a reference numeration error occurred	Connecting with the „IOPCShutdown“ -Interface an error occurred on the OPC-Server	If the OPC-Server does not support the „IOPCShutdown“-Interface orderly, the OPC-configuration function can be switched off
151	State is inquired, although the OPC-Server is disconnected	Internal error	Call Inosoft Hotline
152	Group is to be added, although the OPC-Server is disconnected	Internal error	Call Inosoft Hotline
153	The item X cannot be created, Error:Y	With item creation in a Callr-OPC-Server an error occurred.	Check OPC-Server, probably the setting „VWS creates items“ is selected in the OPC-configuration, although the OPC-Server does not support this
154	The item X cannot be added, Error:Y	With item login to an OPC-Server an error occurred	Check OPC-Server on this item with VWOPCAgent
155	The "Active-Status" of the item X cannot be changed, Error:0xY	With item activation/ deselecting on OPC-Server an error occurred	Check OPC-Server on this item with VWOPCAgent
156	The "Active-Status" of the item X cannot be changed	With item activation/ deselecting on OPC-Server an error occurred	Check OPC-Server on this item with VWOPCAgent
157	The item X cannot be read (asynchronous), Error:Y	With item read on the OPC-Server an error occurred	Check OPC-Server on this item with VWOPCAgent
158	X items cannot be read (asynchronous)	With item read on the OPC-Server an error occurred	Check OPC-Server with VWOPCAgent
159	The item X cannot be written (asynchronous), Error:Y	With item write on the OPC-Server an error occurred	Check OPC-Server on this item with VWOPCAgent
160	X items cannot be written (asynchronous)	With item write on the OPC-Server an error occurred	Check OPC-Server with VWOPCAgent
161	The item X cannot be read (synchronous), quality:X	With item read on the OPC-Server an error occurred	Check OPC-Server on this item with VWOPCAgent
162	The item X cannot be read (synchronous), quality:Y, Error:Z	With item read on the OPC-Server an error occurred	Check OPC-Server on this item with VWOPCAgent
163	X items cannot be read (synchronous)	With item read on the OPC-Server an error occurred	Check OPC-Server with VWOPCAgent
164	The item X cannot be written (synchronous), Error:0xY	With item write on the OPC-Server an error occurred	Check OPC-Server on this item with VWOPCAgent
165	X items cannot be written (synchronous)	With item write on the OPC-Server an error occurred	Check OPC-Server with VWOPCAgent
166	Not all tables of the project database X could be opened	The project database is defective	Set up project again or else create runtime system with SetUp-wizard again.
167	Not all keys of the project database X could be found	The project database is defective	Set up project again or else create runtime system with SetUp-wizard again.

Nr	Error text	Description	Remedy
168	The table X in the project database Y could not be opened	The project database is defective	Set up project again or else create runtime system with SetUp-wizard again.
169	The key X of the table Y in the project database Z could not be found	The project database is defective	Set up project again or else create runtime system with SetUp-wizard again
170	Start of VisiWin32-Driver – No or else wrong universal interface <1.5> stated: X	The interface to the VW32-Driver is configured incorrect	Check interface configuration in the development system
171	Start of VisiWin32-Driver – universal interface assigned twice: X	The interface to two VW32-Drivers is configured twice	Check interface configuration in the development system
172	Registry: X [Value]:Y not found or blank	The indicated value on the registry database could not be found	Call Inosoft-Hotline or check with „Regedit.EXE“
173	Driver could not be started: X	The indicated VW32-Driver could not be started	Start VW32-Driver in test mode and check
174	Driver event not available: X	Internal error in the VW32-error (????)	Call Inosoft-Hotline
175	Driver does not answer: X	The indicated VW32-Driver could not be started	Start VW32-Driver in test mode and check
176	VisiWin32-Driver cannot be closed: X	The indicated VW32-Driver could not be closed	Start VW32-Driver in test mode and check
177	Write queue capacity exceeded - VW32Driver: X	A series of write orders is to be sent to the VW32-Driver at once (i.e.: With recipe write), which exceeds the max. capacity of the write queue	Capacity of write queue is defined to 2000 entries at the time
178	Latency time for driver start expired (X ms): Y	The indicated VW32-Driver could not be started	Start VW32-Driver in test mode and check
179	VisiWin32-Driver deleted?: X	The indicated VW32-Driver was closed manually	During system runtime the VW32-Drivers must not be closed manually, restart system
180	Already connected to the OPC Server	Connecting the OPC-Server again, an internal error occurred	Call Inosoft Hotline
181	Server name cannot be cast into a Multi-Byte string	Internal error	Call Inosoft Hotline
182	CLSID from ProgID cannot be determined	The indicated OPC-Server is registered incorrect	Register OPC-Server
183	Function 'CoCreateInstanceEx' (X) defective	Internal error	Call Inosoft Hotline
184	Server name cannot be cast into an Unicode-String	Internal error	Call Inosoft Hotline
185	Machine name cannot be cast to an Unicode-String	Internal error	Call Inosoft Hotline
186	The complete server name cannot be read from the registry database	The indicated OPC-Server is registered incorrect	Register OPC-Server
187	The OPC-Browser on the remote data processor cannot be found	The program (included in the VWS package) OPCEnum.EXE is not available or else not registered on the remote data	Set up and register OPCEnum.EXE on the remote data processor
188	On the remote data processor the function 'IOPCServerList::CLSIDFromProgID' was processed incorrect	The indicated OPC-Server is registered incorrect on the remote data processor	Register OPC-Server

Nr	Error text	Description	Remedy
189	Function 'CoGetMalloc' defective	Missing system memory	Check memory allocation in the task manager
190	<b>Speicher nicht ausreichend für Dongleabfrage</b>	Missing system memory	Check memory allocation in the task manager
191	Project initializing failed	Internal error	Call Inosoft Hotline
192	Permitted number of objects exceeded	There are more power tags in the project database than permitted through the connected dongle	Upgrade dongle or else delete unnecessary items
193	Permitted number of interfaces exceeded (restricted through software protection)	There are more interfaces in the project database than permitted through the connected dongle	Upgrade dongle or else delete unnecessary interfaces
194	The runtime system could not be logged on in the ROT	The error occurs under Win2000 sometimes	Function is required for special applications only, usually project runs correct
195	No Software protection! System runs as demo version	There is no VisiWinNET-Dongle on the data processor or else it is not recognized by the system	Possibly set up the dongle driver „HLDRV32.EXE“ , if the dongle setup failed
196	Error with VB-Parameter setting (X) in formula (Y)	With parameter call from a VB-formula an error occurred	Check VB-Formula
197	Error with VB-Formula (X) run	With VB-Formula call an error occurred	Check VB-Formula
198	Error with VB-Parameter read (X) in formula (Y)	With parameter call from a VB-Formula an error occurred	Check VB-Formula
199	Formula server (X) could not be registered in GIT	Internal error	Call Inosoft-Hotline
200	Function error: X	Internal error	Call Inosoft-Hotline
201	Life monitoring for system cycle: login or else ping failed	Internal error	Call Inosoft-Hotline
202	OPC-Client – cannot connect to (X)	Connection to the indicated OPC-Server could not be established	Check OPC-Server with test client or else the VWOPCAgent
203	OPC-Client – cannot determine OPC-Server-Status (X)	Function call „IOPCServer.GetStatus“ failed	Check OPC-Server with test client or else the VWOPCAgent
204	OPC-Client – cannot close connection to (X)	The connection to the indicated OPC-Server could not be terminated	Check OPC-Server with test client or else the VWOPCAgent
205	OPC-Client – cannot add private group: X (Y)	The indicated private group cannot be created on the OPC-Server	Check OPC-Server with test client or else the VWOPCAgent
206	OPC-Client – cannot delete private group (X)	The indicated private group cannot be deleted from the OPC-Server	Check OPC-Server with test client or else the VWOPCAgent
207	OPC-Client – cannot activate private group X (Y)	The indicated private group cannot be activated on the OPC-Server	Check OPC-Server with test client or else the VWOPCAgent
208	OPC-Client – cannot deselect private group X (Y)	The indicated private group cannot be deselected on the OPC-Server	Check OPC-Server with test client or else the VWOPCAgent
209	OPC-Client – cannot change private group state (X)	The active/passive-state in the indicated OPC-Server group cannot be changed	Check OPC-Server with test client or else the VWOPCAgent
210	OPC-Client (X): Y	The indicated function call on the OPC-Server failed	Check OPC-Server with test client or else VWOPCAgent