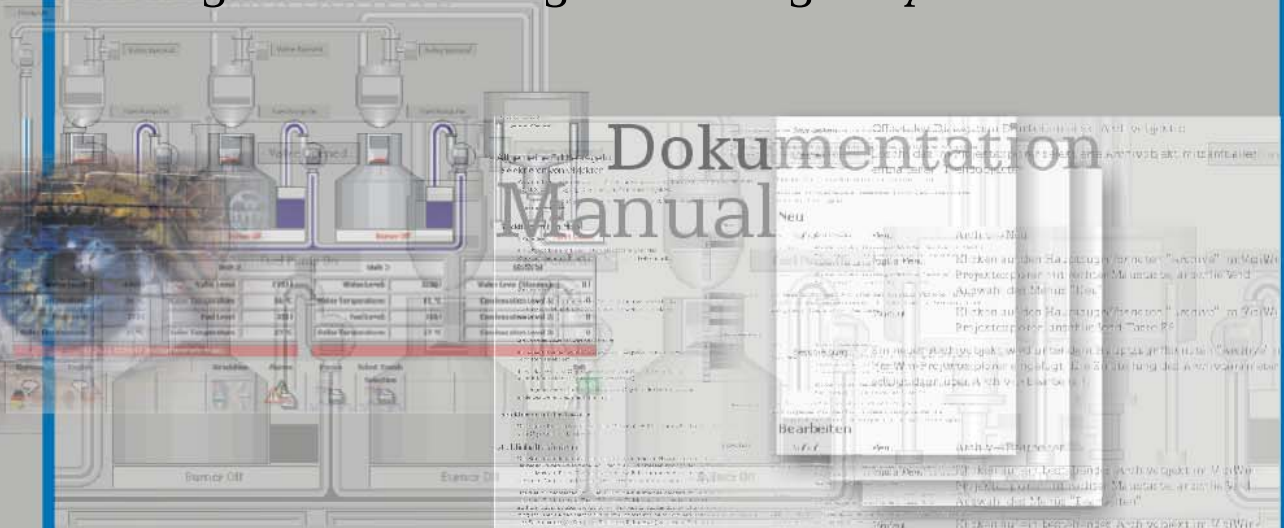


# VisiWinNET 2005

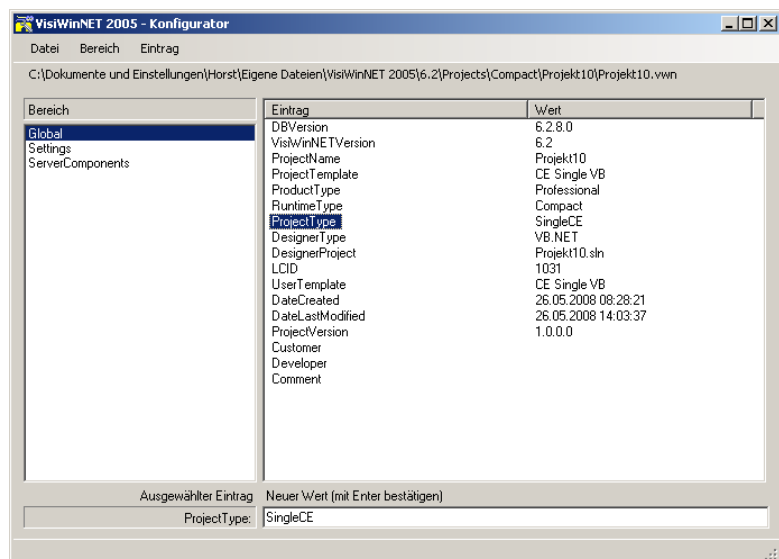
## Configuration settings on a target system



- **VisiWin**
- **VisiWinNET 2005**
- Common
- Class Library
- Systems
- **Tools**
- Technical Informations
- **Inosoft OPCServer**
- Basics and helping tools
- Protocols

# VisiWinNET 2005

Configuration settings on a target system









The contents of this manual must not otherwise be used without explicit written consent from INOSOFT GmbH.

We have checked the contents of this manual for compliance with the described software. Discrepancies can, however, not be ruled out. For this reason we cannot guarantee full compliance. The contents of the manual are subject to regular checking for necessary updates/amendments. Such amendments will be made in the subsequent edition.

Suggestions for improvement are welcome.

## Legend

In order to point out particular paragraphs the following symbols are used in the INOSOFT documentations:

	<b>Attention</b>	Passages with this sign should be read – and observed – with particular attention.
	<b>Hint</b>	Important paragraph “additional information”
	<b>Tip</b>	Many roads lead to Rome; here a shortcut is to be found.
	<b>In work</b>	Functions that are in preparation or already implemented but not yet prepared for documentation.
	<b>Example execute</b>	Instructions to be carried out in an example
	<b>Observe result</b>	Results to be observed with carrying out the exemplary instructions

© / ™ / ®

Windows®, Windows NT®, Windows 2000®, Windows XP® are registered trademarks of the Microsoft company.

Further product names marked ® are trademarks of the appropriate manufacturers.

INOSOFT GmbH created on

VisiWinNET Version: from 6.04.000

created on 08.06.2010

# Contents

<b>1 Preamble</b> .....	<b>1</b>
<b>2 Configuration settings on the target system</b> .....	<b>2</b>
2.1 Operation of the configurator .....	3
2.2 Applications .....	4

# 1 Preamble

## About this manual

This manual deals with the option to configure the project on the target system. Usually, the projector sets parameters at development time whose final values are only determined with the implementation. A typical example is the IP address or the name of a computer or appliance tied into the network with which the visualization communicates. Further examples are timeouts and cycle times, i.e. all settings that are to be regarded as more or less variable up to the final run on the real target system. Usually these settings are established on the development computer by trying. They can, however, differ on the target system, e.g. due to different system performances or network overload.

## Questions and Problems

For technical questions and problems please contact your responsible INOSOFT agent or the INOSOFT GmbH Support under +49 (5221) 16 66 02 or email: [Support@INOSOFT.com](mailto:Support@INOSOFT.com)

Frequent questions and problems are dealt with on our homepage under [www.inosoft.com](http://www.inosoft.com)

There you will also find a support area for direct contact with our Main Office.

## 2 Configuration settings on the target system



The functions introduced here cannot be used in projects for the "Windows CE" operating system.

This manual deals with the option of project configuration on the target system. At development time the projector usually sets parameters whose final value is only determined with the implementation. A typical example is the IP address or the name of a computer or device tied in with the network which the visualization communicates with. Further examples are timeouts and cycle times, i.e. all settings that are to be regarded as more or less variable until the final run on the real target system. Usually, these settings are established on the development computer by trying. They can, however, due to different system performances or network loads vary on the target system.

With the "VisiWinNET Configurator" program contained in VisiWinNET individual configuration settings can be adapted without the development system having to be installed. There are differences between the different runtime systems:

### **Standard**

The program is part of the VisiWinNET runtime. The "VisiWinNET.Configurator.exe" file is after running the runtime setup beneath the installation folder in the "Common" sub-index.

### **Compact**

The configurator cannot be used with the "Windows CE" operating system. It must also be noted that the "VisiWinNET.Configurator.exe" file is not part of a complete runtime setup. Therefore, it must be manually copied to the target system.

The following chapters deal with:

- Operation of the configurator
- Typical applications

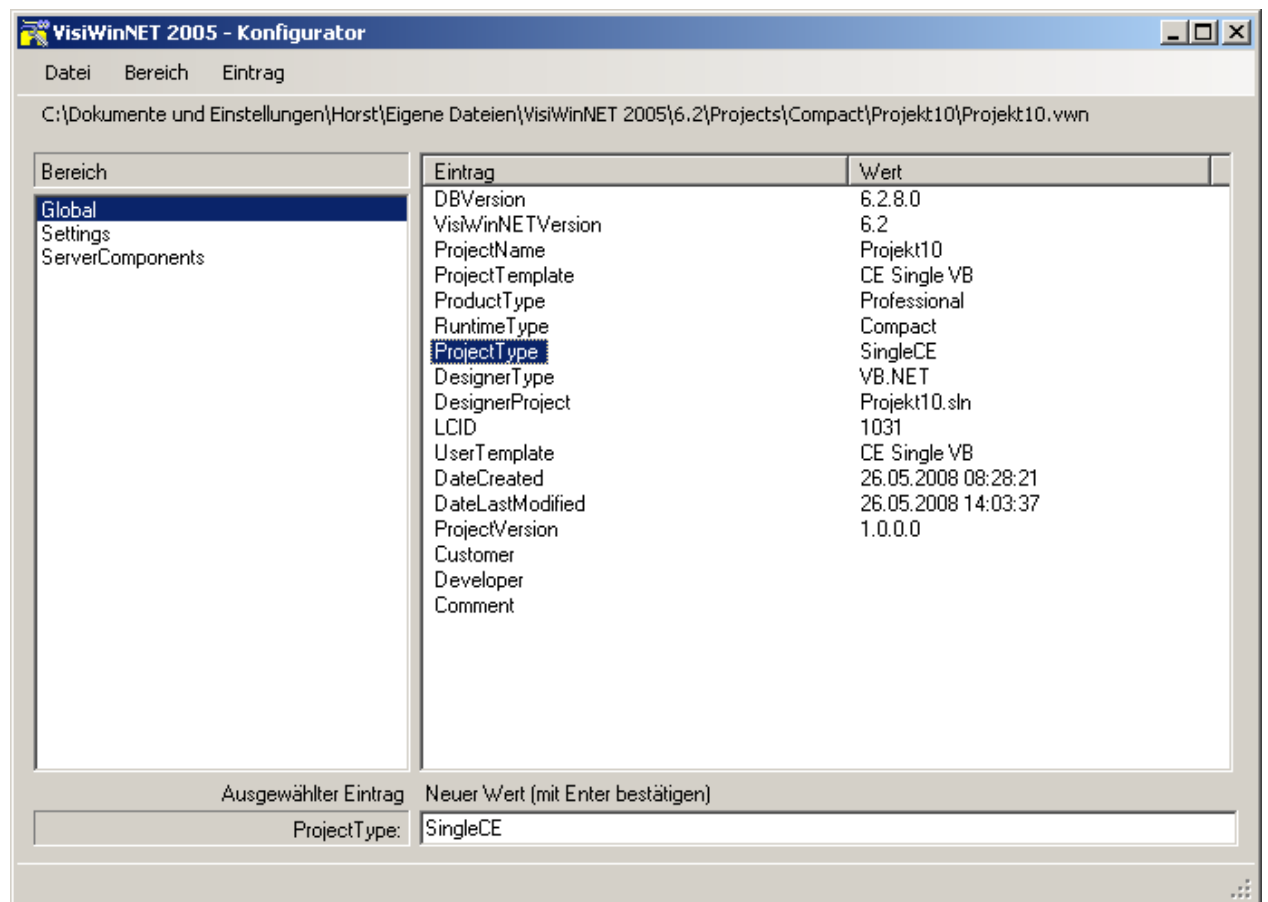
## 2.1 Operation of the configurator

To access the configurator there is an entry on the development computer in the Windows start menu (Start→Programs→VisiWin→VisiWinNET 2005→VisiWinNET Configurator"). On the target system there is the executable "VisiWinNET.Configurator.exe" file beneath the installation folder in the "Common" sub-index.

To edit the configuration entries of a project that project must be selected first through

the menu function "File→Open project". The selection is made directly through the

project databank (<Project name>.vwn).



After loading a project the existing configuration entries are displayed separated into areas. Therefore, to change an entry the appropriate area (left list) must be selected first, then the name of the configuration entry (right list). In the "New value" field the value of the configuration entry can then be changed.



- The input is always to be confirmed with "Enter".
- There is no verification of the entered value. Therefore, changes through the configurator always have to be made with care. It is also advisable to create a backup copy of the project

databank before changing configuration settings.

- As a rule any change is only valid after a re-start of the application.
- Certain configuration entries are written to the project databank by the runtime when the application is ended. It is, therefore, advisable to end the project earlier.
- Through the main menu areas and entries can be added or deleted. You should only use these functions in support cases, and only under instruction by the support staff.

## 2.2 Applications

Below a list of the configuration settings that are in practice only made with the target system:

**Computer names** In the "Computer Names" area the list of computer names is displayed. If for example an OPC server is used in the network the real name or the IP address of the computer can be specified in the appropriate entry (see manual "Process connection", parameter "Computer name" of a communication channel).

**Server computer in a Client project** Area "ClientConfig", entry "ServerComputerName": here the computer name on which the server project is running can be specified.

**VWNManagerDialogs** Often forgotten and only found last minute in situ: certain entries in the VisiWinNET Manager menu are not to be accessible by the end user.

The appropriate configuration settings are in the "config" area:

- DisableVariablesDialog: blocks the variable dialog
- DisableStartStopExitMenu: blocks the menu entries "Start", "Stop" und "End"
- DisableConfigurationDialog: blocks the configuration dialog

**Timeouts** If errors occur with the start of the project after a longer waiting period it is possible that a communication component requires more time for the initialization than allowed by the default timeouts of the system. In this case the appropriate values for the timeouts in the "ClientConfig" area can be set higher. The entries here are "ConnectionTimeout" and "RPCTimeout".

**Configuration settings of VisiWin drivers** If a VisiWin driver is used in the project, and connection-specific parameters need to be changed that were set in the configuration dialog on the development system the appropriate area can be established with the interface number (the interface number is mentioned in the properties of the communication channel). Every communication channel that communicates through a VisiWin driver creates an area "Device<interface number>" in the configuration entries.

**Configuration  
settings of VisiWin  
OPC servers**

Every VisiWin OPC server creates for its configuration data an .area that is named after the ProgID of the OPC Server-